

Catalog



reddot winner 2020

# Public Spaces

**V//COUSTIC**  
INNOVATIVE ACOUSTIC SOLUTIONS



Catalog

# Public Spaces

6	Why is <b>acoustics</b> so important?
8	<b>VicShape 3D</b> <small>NEW</small>
10 – 23	<b>VicStrip</b> <small>NEW</small>
16	<b>VicStrip</b> Square
18	<b>VicStrip</b> Double
20	<b>VicStrip</b> Double Square
22	<b>VicStrip</b> Spacer Kit
24 – 53	<b>VMT Line</b>
26	<b>GEN_VMT</b> Collection
28	<b>GEN_VMT</b> PENRAY 01 Cloud
30	<b>GEN_VMT</b> PENRAY 01 Tiles
32	<b>GEN_VMT</b> PENRAY 01 Panels
34	<b>GEN_VMT</b> PENRAY 02 Tiles
36	<b>Flat Panel</b> VMT
40	<b>VicSpacer</b> MKII <small>NEW</small>
41	<b>VicSpacePlus</b> MKII <small>NEW</small>
42	<b>Vixagon</b> VMT
44	<b>Vixagon</b> VMT Collections

- 46 **VicWallpaper** VMT
- 48 **ViCloud** Flat VMT
- 50 **ViCloud** 3D VMT
- 52 **Suspended** Baffle 3D

## 54 — 59 **Cinema VMT Line** NEW

- 56 Piano VMT / Forte VMT  
/ Fortissimo VMT

- 60 **Flat Panel** PET HD NEW

- 62 **Suspended** Baffle Set NEW

- 64 **VicFix** systems

- 66 **Finishes**

- 70 **Vicoustic**

# Why is **acoustics** so important?

**The experience we have of a building is always influenced by its acoustics. We spend around 90% of our time inside buildings and naturally their acoustic quality is essential to people's health and comfort.**

Therefore, if the acoustic quality of a space is poor that space cannot be called sustainable, since it can disrupt our work, activities and health.

Restaurants and offices are two good examples that illustrate this disruption. Excessive noise is one of the major complaints in restaurants, cafes or pubs. Many of those loose clients who leave or don't return because of noise. Many workers experience excessive stress or even headaches due to excessive noise inside an office.



Now, if to control the acoustics of a space you introduce acoustic panels that contain harmful materials, we then may end up compromising the air quality of the space. As a result, this type of space, even with good acoustics, can neither be seen as sustainable.

Vicoustic's new line of products takes an holistic approach into account and addresses acoustic issues by fully integrating its acoustic performance with other sustainability goals, such as air quality, use of recycled materials, human safety, design, quality, durability, etc.



# Safe and sound designs

**Vicoustic develops a wide range of solutions for public spaces, combining acoustic performance with great design.**

The VMT line is made from VicPET Wool, a non-woven textile with superb acoustic performance predominantly made from recycled plastic bottles. Through extensive research and testing, Vicoustic fine-tuned this material for high performance. Thanks to an innovative dyeing technology, VMT can simulate any type of surface and be customized.

The new Cinema Family, inspired by the Dynamics of a music piece, expands our range, from standard Piano to enhanced Fortissimo sound absorbers.

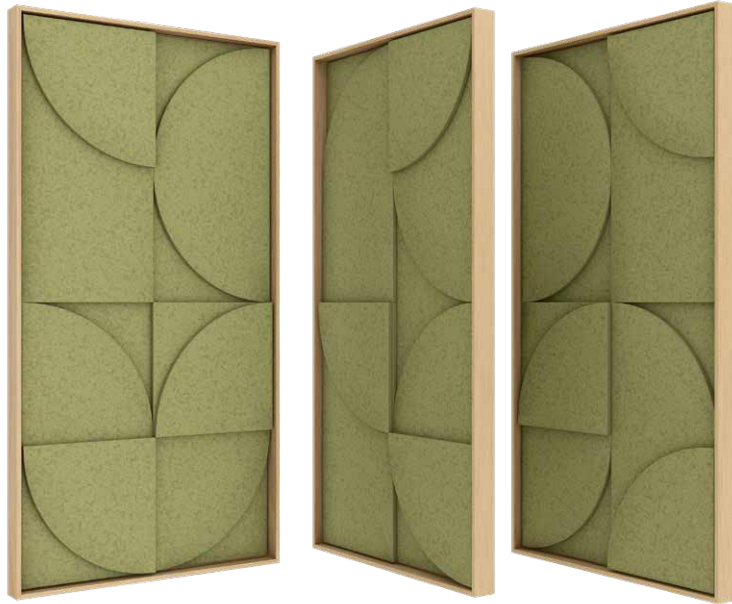
Since design is part of the brand's DNA - Vicoustic stands for Visual Acoustics - the GEN\_VMT collection, made of tiles and clouds with endless combinations, was awarded a Red Dot Product Design 2020.

The new VicStrip and VicShape 3D lines introduce new ranges of solutions using PET for acoustic absorption, with designs that match contemporary styling decorative panels.

Feeling creative? Start combining acoustic solutions with great visual designs in the following pages of this catalog.

# VicShape

## 3D / 3D Duo



The new VicShape 3D collection brings sound treatment to the world of framed relief art panels, combining Vicoustic's know-how in acoustics with innovative design.

Vicoustic created a panel that combines art with acoustic performance. The single **VicShape 3D** and the two panels of the diptych **VicShape 3D Duo** are relief art panels elaborated from three layers of PET HD for sound absorption enclosed in a high-quality premium frame in natural oak veneer.

### Features

- Ready to hang on the wall without the need of adhesive glue
- Made from recycled material enhanced for sound absorption
- Framed in a high-quality premium frame in natural oak veneer

### Package Information

- A** 1 unit/box
- B** 2 units/box

### Dimensions

1160 × 595 × 52mm / 45.7" × 23.4" × 2.1" (unit)

### Technical Information

**Raw Material:** High-density PET and Pine Wood with Oak veneer

#### Acoustic Properties:

Medium and High frequencies Absorption

**NRC:** 0.65

#### Installation:

Hanging support bracket (included)

### PET Colors



Black



Grey



Green

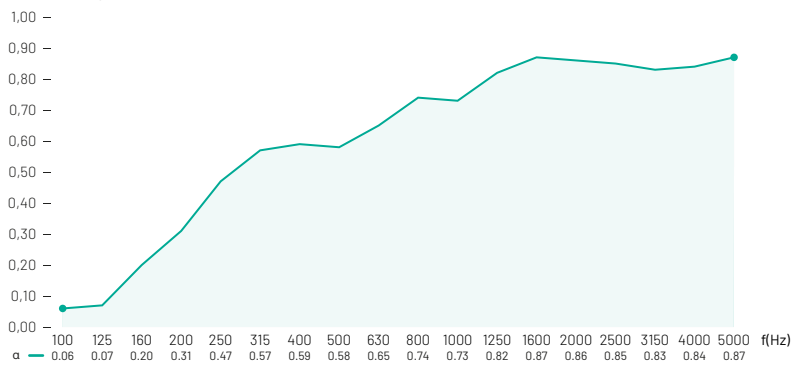


Light Grey

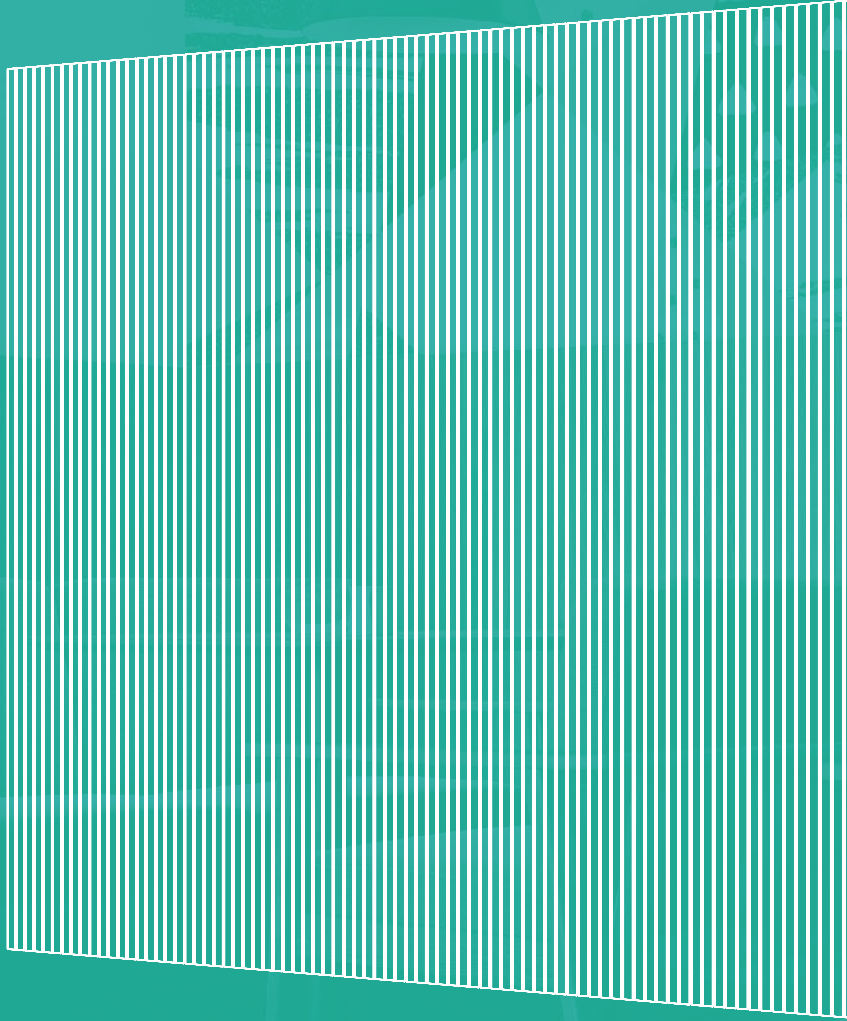


### Acoustic Performance

Sound Absorption Coefficient

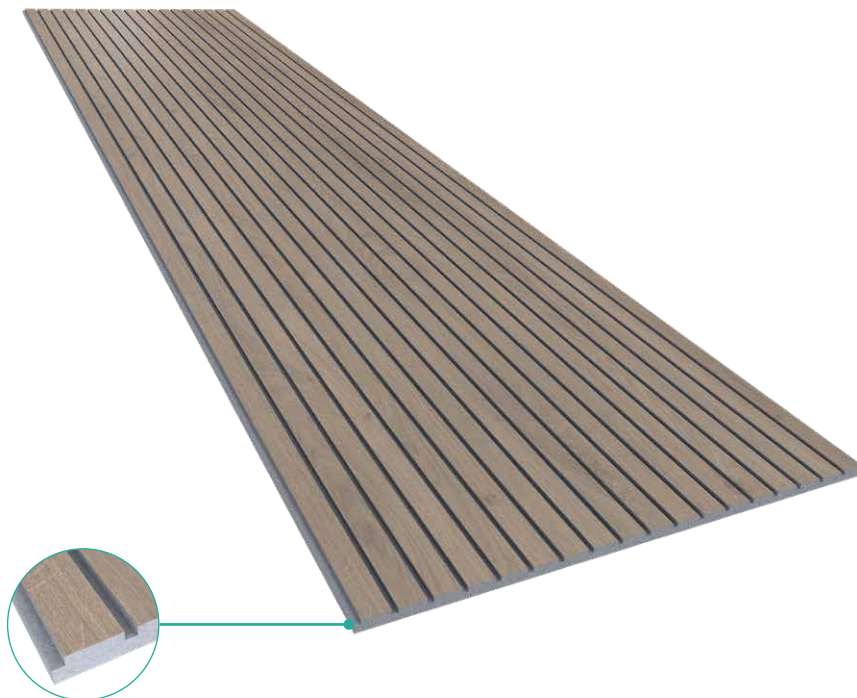


# VicStrip





# VicStrip

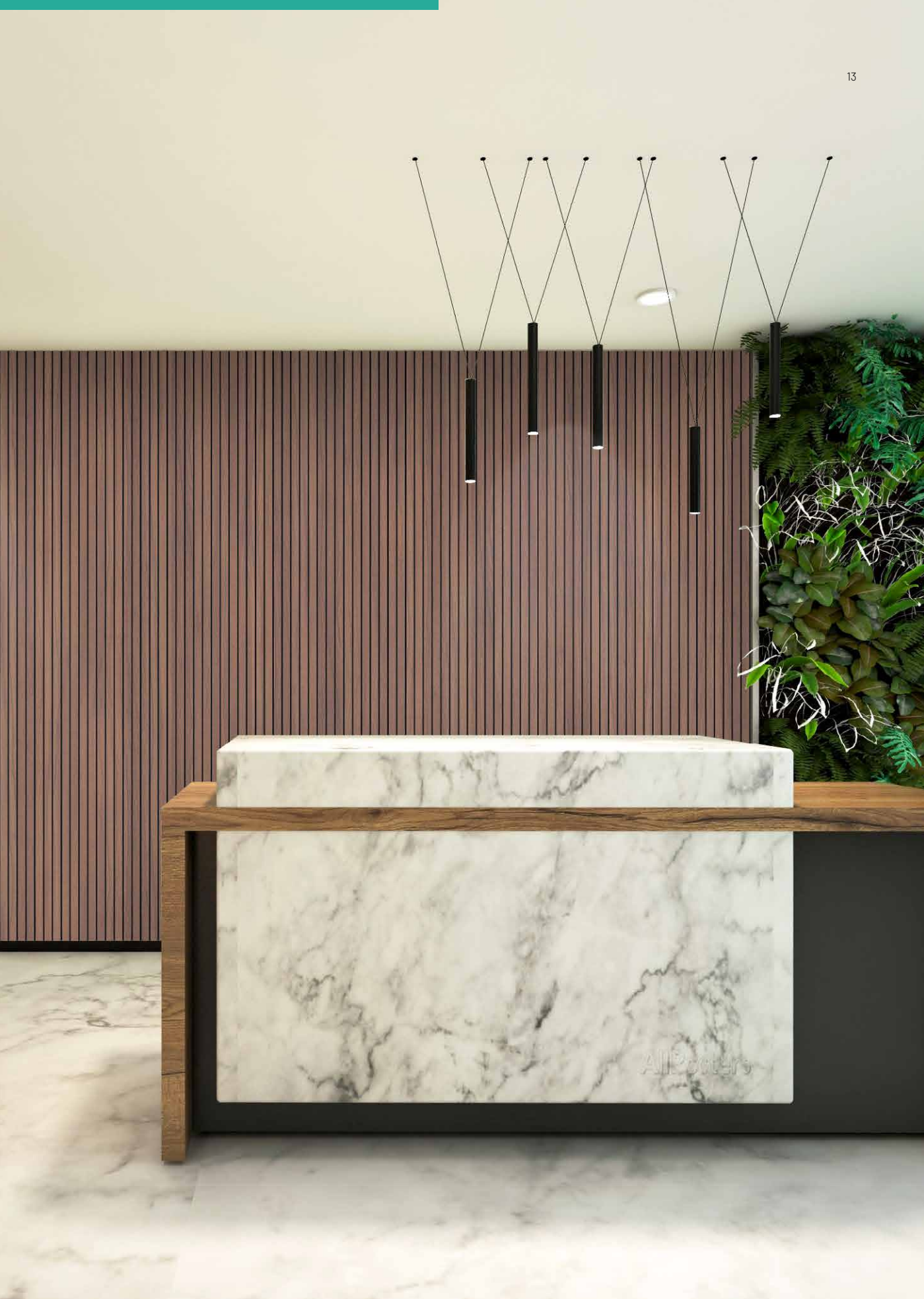


Now, also in Grey PET

VicStrip is a new innovative approach to slat panels by introducing Laminated VicPET Wool free of wood, making it more sustainable, flexible and lightweight.

**VicStrip** was drawn with the lines of contemporary styling decorative wall panels, for anyone that wishes to provide offices, restaurants, hotels, and homes with a design embellished solution amid the added value of removing sound reverberation.

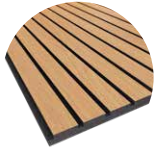
VicStrip can be easily glued to walls and ceilings, free of metal nails and with joints almost invisible. Less weight also means less expensive shipment and faster transport and installation.



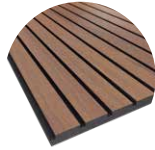


## Finishes

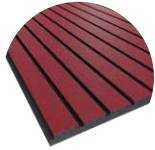
### Wood Colors



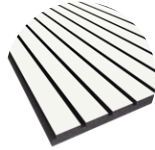
Natural Oak



Natural Walnut



Garnet Red



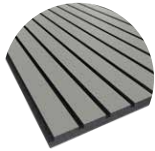
White Matte



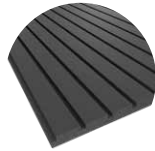
Brown Oak



Dark Walnut



Reed Green

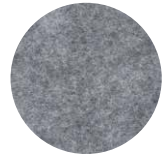


Black Matte

### PET Colors

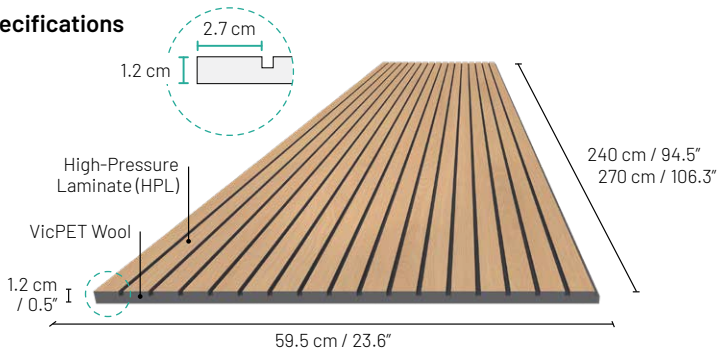


Black



Grey

## Specifications



## Dimensions

- A** 240 × 59.5 × 1.2 cm  
/ 94.5" × 23.4" × 0.5"
- B** 270 × 59.5 × 1.2 cm  
/ 106.3" × 23.4" × 0.5"

## Package Information

2 / 4 units/box

## Technical Information

**Raw Material:** VicPET Wool and HPL (High-Pressure Laminate)

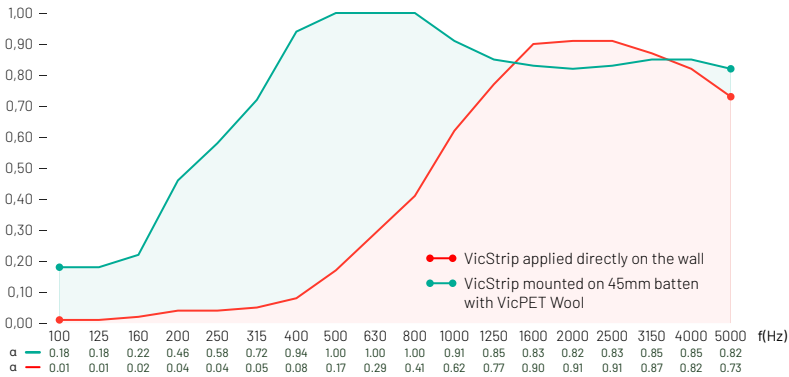
**Acoustic Properties:** Medium and High Frequencies Absorption

**NRC:** Directly on the wall: 0.45; Mounted on 45 mm batten with VicPET Wool (40 mm) behind the panels: 0.85

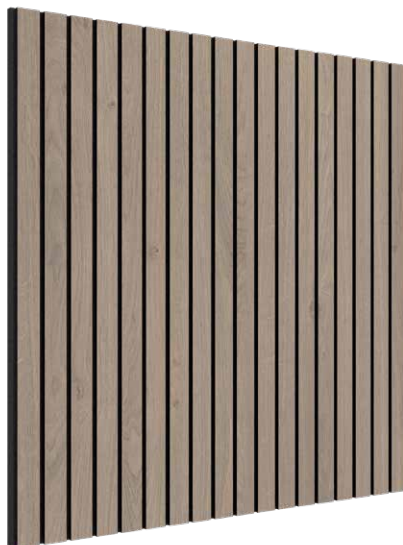
**Installation:** Screwed to plasterboard walls or wooden structures (screws included); Flexi Glue Ultra, on masonry or concrete walls (not included)

## Performance

### Sound Absorption Coefficient



# VicStrip Square



The new size of the slat panels makes it possible to combine the VicStrip in different sizes, complete certain surfaces that may not match the original sizes of the panels, and mix the panels in different dispositions or with other square acoustic panels.

Being an acoustic panel shorter in size, VicStrip Square is even more flexible to cut and adjust to any setting.

## Dimensions

59.5 × 59.5 × 1.2 cm / 94.5" × 23.4" × 0.5"

## Package Information

8 units/box

## Technical Information

**Raw Material:** VicPET Wool and HPL (High-Pressure Laminate)

**Acoustic Properties:** Medium and High Frequencies Absorption

**NRC:** Directly on the wall: 0.45;

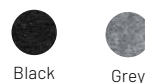
Mounted on 45 mm batten with VicPET Wool (40 mm) behind the panels: 0.85

**Installation:** Screwed to plasterboard walls or wooden structures (screws included); Flexi Glue Ultra, on masonry or concrete walls (not included)

## Wood Colors

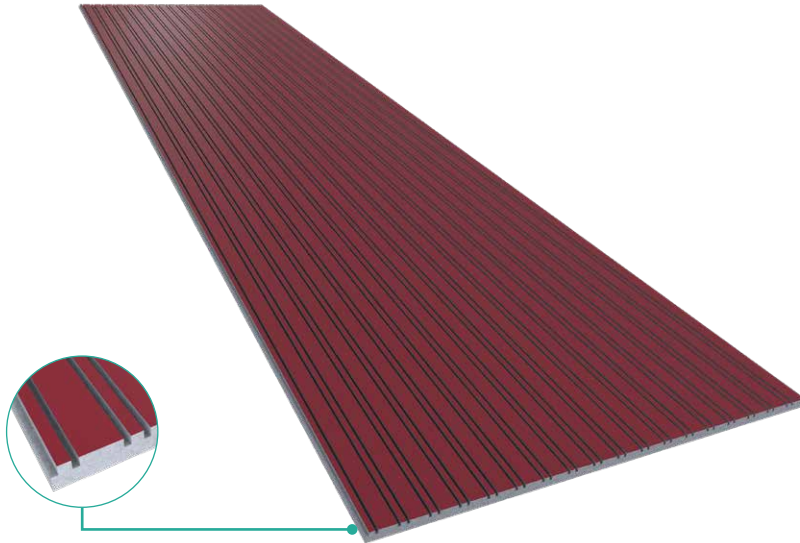


## PET Colors





# VicStrip Double



VicStrip Double stands out for its exclusive pattern of lines. Why? Its sophisticated design features different-sized strips symmetrically interposed. The main wood pattern or matte color is highlighted by thin tears, making this acoustic panel an elegant choice next to common slat panels.

Like its sister product, VicStrip Double is made from wood-free Laminated VicPET Wool, a feature that allowed its distinctive design, ensuring a sustainable, flexible and lightweight panel.

## Dimensions

- A** 240 × 59.5 × 1.2 cm  
/ 94.5" × 23.4" × 0.5"
- B** 270 × 59.5 × 1.2 cm  
/ 106.3" × 23.4" × 0.5"

## Package Information

2 / 4 units/box

## Technical Information

**Raw Material:** VicPET Wool and HPL  
(High-Pressure Laminate)

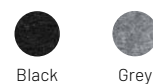
**Acoustic Properties:** Medium and High  
Frequencies Absorption

**Installation:** Flexi Glue Ultra, on masonry  
or concrete walls (not included)

## Wood Colors



## PET Colors







# VicStrip Double Square



The exclusive design of VicStrip Double Square turns more versatile with a square version of the panel. Being shorter, this 59.5x59.5cm panel is even more flexible to cut and adjust to any setting, blending with other panels in different dispositions and combinations.

Like the other VicStrip line products, VicStrip Double Square is made from wood-free Laminated VicPET Wool, a feature that allowed for its distinctive design, ensuring a sustainable, flexible and lightweight panel.

### Dimensions

59.5 x 59.5 x 1.2 cm / 94.5" x 23.4" x 0.5"

### Package Information

8 units/box

### Technical Information

**Raw Material:** VicPET Wool and HPL (High-Pressure Laminate)



**Acoustic Properties:** Medium and High Frequencies Absorption

**Installation:** Flexi Glue Ultra, on masonry or concrete walls (not included)

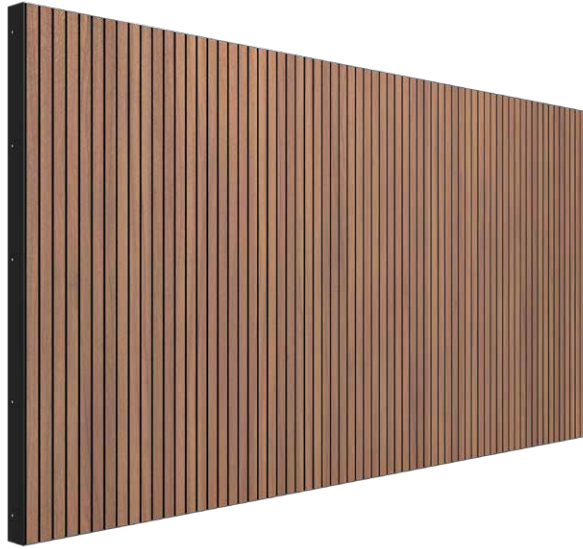
### Wood Colors

-  Natural Oak
-  Natural Walnut
-  Garnet Red
-  Black Matte
-  Brown Oak
-  Dark Walnut
-  Reed Green
-  White Matte

### PET Colors

-  Black
-  Grey

# VicStrip Spacer Kit



**VicStrip Spacer Kit** is an acoustic kit that improves the innovative slat panel VicStrip by using the frame structure of a VicSpacer XXL with an air gap and an additional layer of PET to enhance its acoustic performance engineered for demanding rooms, which require a more effective sound absorption capacity.

The acoustic performance improvement with the two layers of PET and air gap makes the decorative VicStrip a sound-absorbing panel designed for select indoor spaces.

## Kit contents

- 4 un. of VicStrip 1190 × 595 × 12 mm
- 4 un. of VicPET Wool 1190 × 595 × 8 mm
- 1 un. VicSpacer XXL with Black Frame

## Dimensions

2384 × 1194 × 66 mm / 93.8" × 47" × 2.6"

## Package Information

1 unit/box

## Technical Information

**Raw Material:** VicPET Wool, HPL, Wood and Lacquered Steel

**Acoustic Properties:** Medium and High Frequencies Absorption

**NRC:** 0.85

**Installation:** Screwed to the wall (screws included only for the PET layer and VicStrip panels)

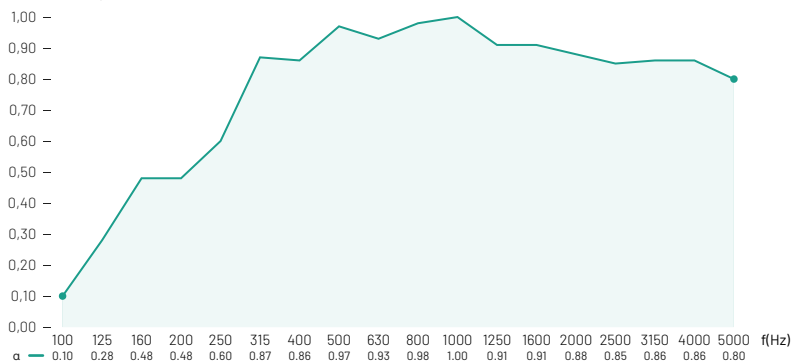
## Wood Colors





## Performance

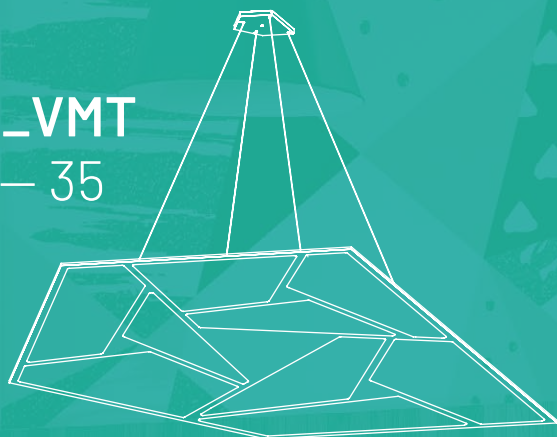
Sound Absorption Coefficient



# VMT Line

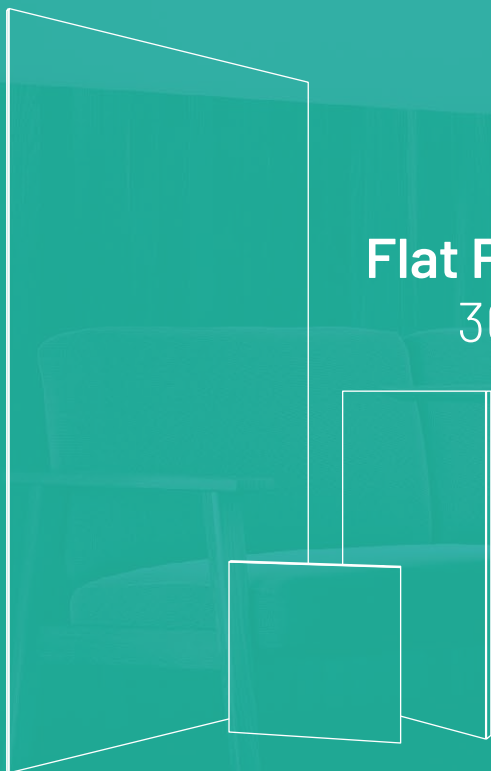
**GEN\_VMT**

26 – 35



**Flat Panel VMT**

36 – 39

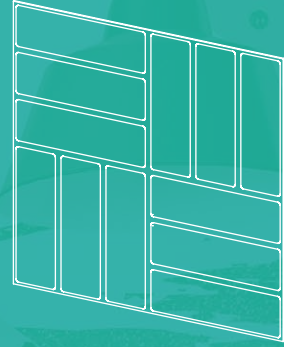


**Vixagon VMT**

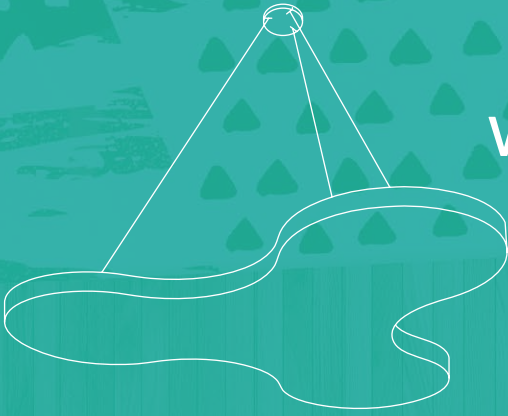
42 – 45



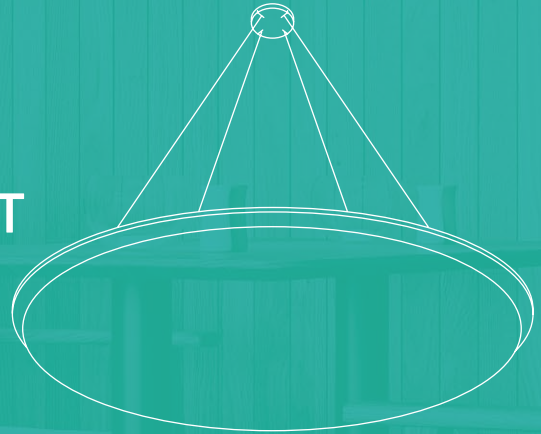
**VicWallpaper VMT**  
46 – 47



**ViCloud Flat VMT**  
48 – 49



**ViCloud 3D VMT**  
50 – 51



**Suspended  
Baffle VMT 3D**  
52 – 53



# GEN\_VMT

## The Generative Collection



reddot winner 2020

**GEN\_VMT solutions result from geometric research in fields of pentagonal tiling where each individual piece is in the shape of a pentagon.**

In this exploratory work, we were looking for a shape grammar that allows generating endless combinations of single or double main shapes. Besides this main approach, we add a new layer of complexity, the ice-ray recursive pattern. The generation of the ice-rays is simple and clear. The rules essentially bisect any existing polygonal shape into two polygonal figures.

Variations for this grammar typically consist of changing the resulting combination from two shapes into many different forms that create a triangular profile towards the center.

Through this geometric approach, we can define a set of rules to create complex shapes, generating a perfect balance between aesthetics and acoustic optimization.

This creative perspective represents a new paradigm in terms of concepts based on generative and performative processes. For this collection, we've selected two different types of pentagons. Each one generates a different product called PENRAY 01 and PENRAY 02.

**GEN\_VMT won the Red Dot Award 2020 for outstanding design quality**

# GEN\_VMT PENRAY 01 Cloud



The first set of clouds from the GEN\_VMT collection, winner of the Red Dot Product Design Award 2020, raises the bar to a higher level. Sustainable and extremely durable, **PENRAY 01 Cloud** can significantly reduce excess noise in various settings, adding an innovative interior design asset to an architectural project. Plus, being a suspended acoustic element, it presents twice the area of absorbing material exposed next to a common acoustic panel.

### Dimensions

1187 × 949 mm / 46.7" × 37.4"

### Package Information

1 units/box



reddot winner 2020



### Technical Information

**Raw Material:** VicPET Wool

**Acoustic Properties:** Medium and High Frequencies Absorption

**Fire Rate:** Europe: Euroclass B S2, d0; USA: Class A (ASTM-E84)

**Installation:** Mechanical and Magnetic Suspended Fixation

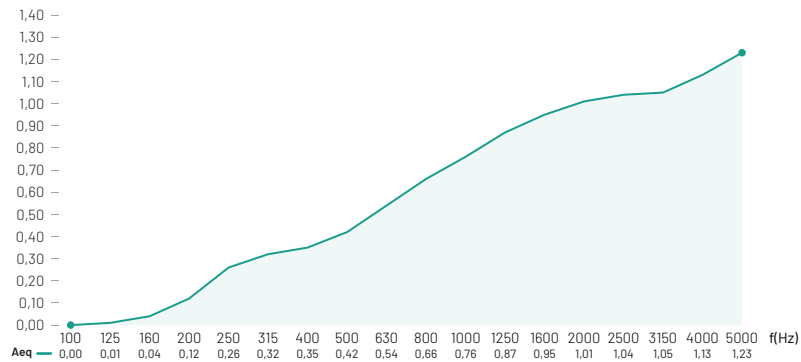
### VMT Colors

			
Bondi Blue 1	Coral 1	Moss Green 1	Natural White
			
Bondi Blue 2	Coral 2	Moss Green 2	
			
Bondi Blue 3	Coral 3	Moss Green 3	

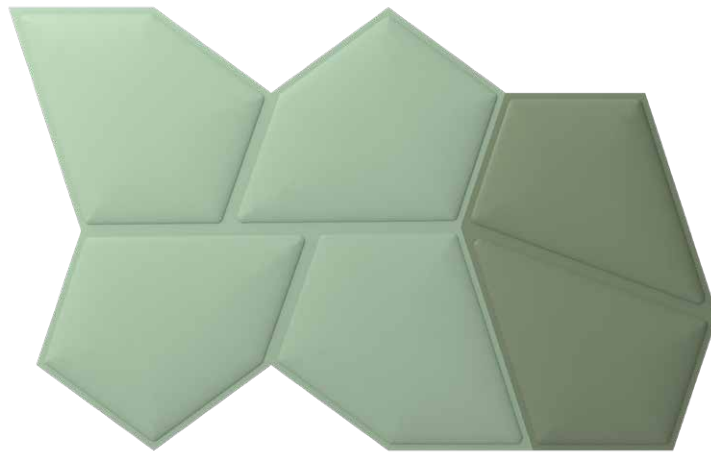


## Performance

Equivalent Absorption Area (m<sup>2</sup>/unit)



# GEN\_VMT PENRAY 01 Tiles



A set of small tiles formed by two different modules, that once connected generate regular and irregular grids, exploring different colors and combinations. A perfect solution for small spaces.

This new set of tiles from the GEN\_VMT collection, winner of the Red Dot Product Design Award 2020, is highly effective to reduce excess noise in various settings, adding an innovative interior design asset to an architectural project.

## Dimensions

Tile 01.1: 400 × 460 × 20 mm  
/ 15.8" × 18.1" × 0.8"

Tile 01.2: 230 × 320 × 20 mm  
/ 9.1" × 12.6" × 0.8"



reddot winner 2020



## Technical Information

**Raw Material:** VicPET Wool

**Acoustic Properties:** Medium and High  
Frequencies Absorption

**NRC:** 0,30

**Fire Rate:** Europe: Euroclass C s2, d0;  
USA: Class A (ASTM-E84)

**Installation:** Flexi Glue Ultra

## Package Information

12 units/box

## VMT Colors



Bondi  
Blue



Coral



Moss  
Green

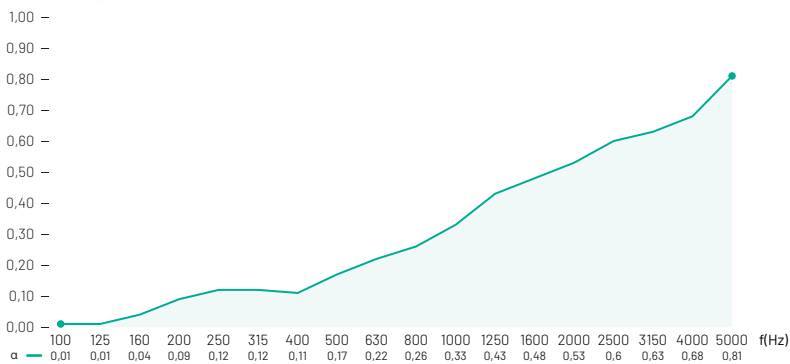


Natural  
White



### Performance

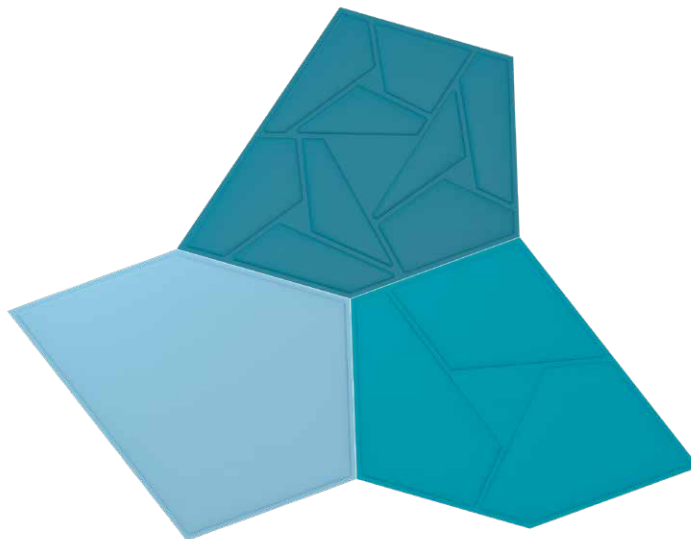
Sound Absorption Coefficient



### Features

- Premium high density VicPET Wool
- High Performance in medium and high frequencies
- Light weight
- Easy to install
- Easy to clean and maintain

# GEN\_VMT PENRAY 01 Panels



From the GEN\_VMT collection, **PENRAY 01 Panels** are an outstanding solution to fill out large surfaces. Formed by three different modules, the combinations are genuinely boundless. Functionality, sustainability, and aesthetics are all combined to generate a remarkable acoustic panel. GEN\_VMT Penray 01 Panels come in 6 units per box, that include 2 units of the flat shape, 2 units of the intermediate embossed shape and 2 units of the shape with more relief details. Each tile fills an area of 0.31m<sup>2</sup> and the 6 units fill 1.86m<sup>2</sup>.

## Dimensions

600 × 705 × 20mm / 23.6" × 27.8" × 0.8"

## Package Information

6 units/box



reddot winner 2020

## Technical Information

**Raw Material:** VicPET Wool

**Acoustic Properties:** Medium and High

Frequencies Absorption

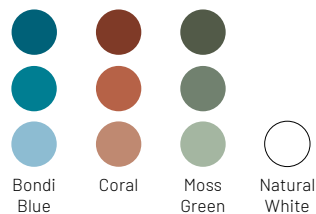
**NRC:** 0,30

**Fire Rate:** Europe: Euroclass C s2, d0;

USA: Class A (ASTM-E84)

**Installation:** Flexi Glue Ultra

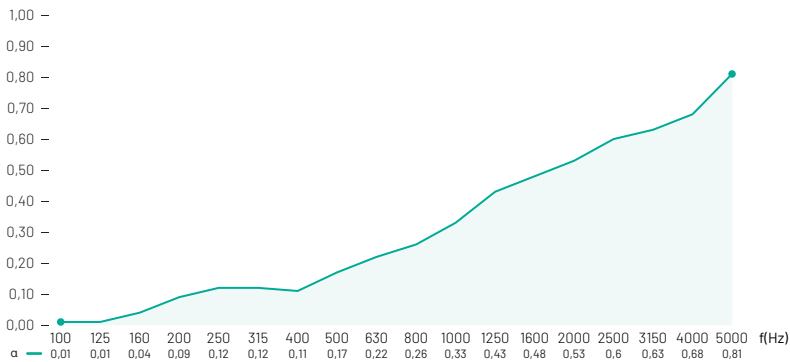
## VMT Colors





**Performance**

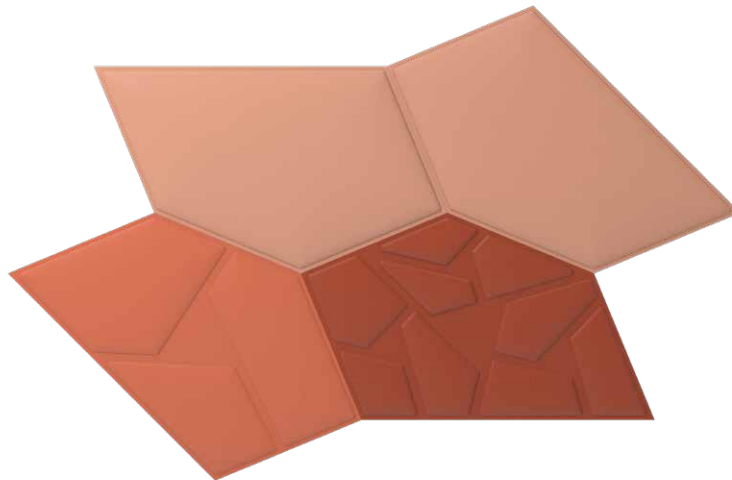
Sound Absorption Coefficient



**Features**

- Premium high density VicPET Wool
- High Performance in medium and high frequencies
- Light weight
- Easy to install
- Easy to clean and maintain

# GEN\_VMT PENRAY 02 Tiles



The first set of solutions from the GEN\_VMT collection, winner of the Red Dot Product Design Award 2020, are the **PENRAY 02 Tiles**. Presented in 4 different shapes, these tiles can be combined according to the will of each person. This results of geometric research in fields of pentagonal tiling where each individual piece is in the shape of a pentagon. In this exploratory work we were looking for a shape grammar that allows generating endless combinations of single or double main shapes.

## Dimensions

355 × 355 × 20 mm / 14" × 14" × 0.8"

## Package Information

12 units/box



reddot winner 2020

## Technical Information

**Raw Material:** VicPET Wool

**Acoustic Properties:** Medium and High

Frequencies Absorption

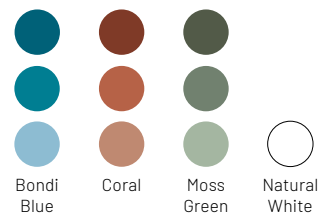
**NRC:** 0,30

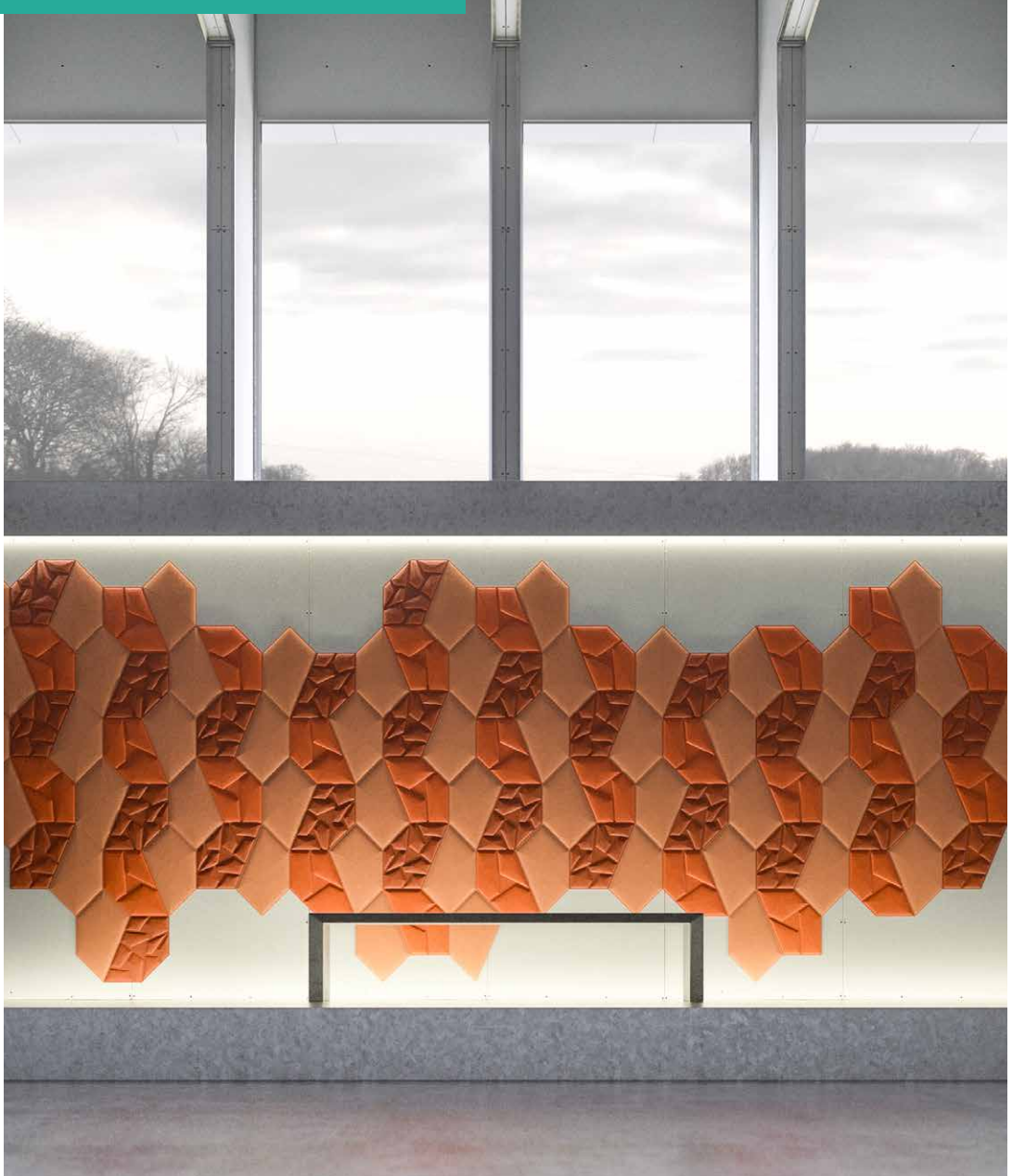
**Fire Rate:** Europe: Euroclass C s2, d0;

USA: Class A (ASTM-E84)

**Installation:** Flexi Glue Ultra

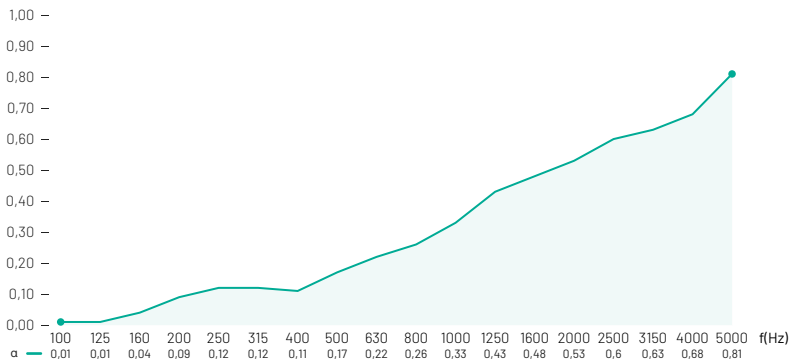
## VMT Colors





**Performance**

Sound Absorption Coefficient



**Features**

- Premium high density VicPET Wool
- High Performance in medium and high frequencies
- Light weight
- Easy to install
- Easy to clean and maintain



# Flat Panel

## VMT



**Flat Panel VMT** is designed to perform primarily in the medium and high frequencies. Therefore, these panels provide a great acoustic solution to implement in any commercial or residential setting and can be used on ceilings and walls. The applications for Flat Panel VMT are infinite, making it perfect for both new construction and refurbishment projects.

## Innovative dyeing technology

With an innovative dyeing technology, **Flat Panel VMT** panels can simulate concrete, marble, wood and other materials, achieving an amazing and realistic look in any setting.



### VMT Colors



All available patterns can be found at the end of the Catalog and at [vicoustic.com](http://vicoustic.com); \*Patterns available only in 20 mm VMT

## Custom Design

Vicoustic can produce any color, pattern or shape that customers need for their space.

Through the use of an innovative dyeing technology in VMT (Virtual Material Technology), it's possible to replicate many kinds of images or surfaces in a high performance acoustic solution.

If you are looking to **print your Company Logo into a wall, a particular image or a specific color**, with the added benefit of having acoustic treatment, this is the solution that best fits you.

To have a personalized or customized panel, please Request your Project to Vicoustic's Team: [sales@vicoustic.com](mailto:sales@vicoustic.com).



## Installation solutions



**Flexi Glue Ultra**  
Apply the glue to the back of the panel

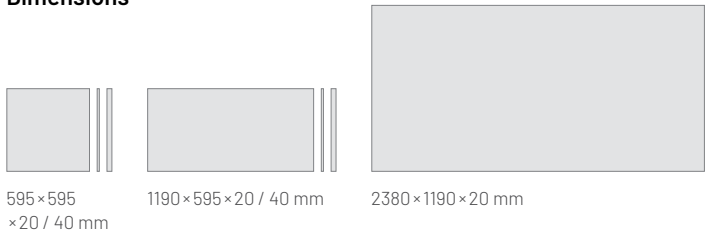


**AluFrame VMT T**  
Combine two panels with a glamorous frame line



**VicSpacer MKII / VicSpacer Plus MKII**  
Enhance acoustics by spacing the panel 40mm from the wall

## Dimensions



## Package Information

8 units/box; 4 units/box (20 mm panels); 2 units/box (2380 × 1190 mm panels)

## Technical Information

**Raw Materials:** VicPET Wool

**Acoustic Properties:** Medium and High frequencies Absorption / **NRC:** 20 mm: 0,55; 40 mm: 0,70

**Fire Rate:** 20 mm: Europe: Euroclass B -s2, d0; USA: Class A (ASTM-E84);

Canada: CAN/ULC S102, Flame Spread Rating: 5, Smoke Developed Classification: 115;

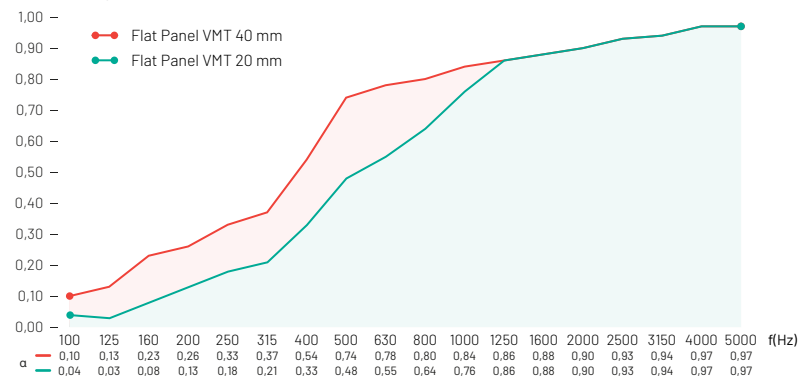
40 mm: Europe: Euroclass B - s2, d0; USA: Class A (ASTM-E84)

**Installation/Accessories:**

Flexi Glue Ultra; AluFrame VMT T; VicSpacer MKII; VicSpacer Plus MKII, VicSpacer XXL

## Acoustic Performance

**Sound Absorption Coefficient**



**OEKO-TEX®**  
CONFIDENCE IN TEXTILES  
**STANDARD 100**

# VicSpacer MKII

**VicSpacer MKII is a fixation system for Flat Panel VMT, specially developed to improve the acoustics of any room.**

By spacing the panel 40 mm away from the walls / ceiling, VicSpacer helps to enhance the Flat Panel VMT acoustic performance in the medium / low-frequency regions.

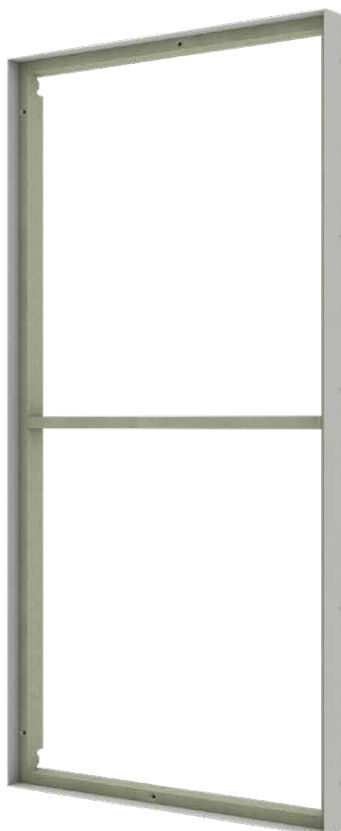
**VicSpacer** will need to be combined with Flat Panel VMT of 20 mm thickness (not included).

### Main features

- It makes Flat Panel VMT compatible with the VicFix J profile system
- Covers the white sides of Flat Panel VMT
- Improves substantially the acoustic performance of Flat Panel VMT
- Can be installed in the ceiling<sup>1</sup> and corners<sup>2</sup>, acting as Bass Trap



For Flat Panel VMT 2380x1190mm, use **VicSpacer XXL**.



### Colors



White Matte



Black Matte



Grey Matte

<sup>1</sup> For ceiling installation do not use the VicFix Mini supplied with the product; fix the panels with screws.

<sup>2</sup> For corner installation use VicFix Corner Plus (sold separately).

### Dimensions

599 × 1194 × 66 mm / 23,6" × 47,0" × 2,6"

### Package Information

2 units/box

### Technical Information

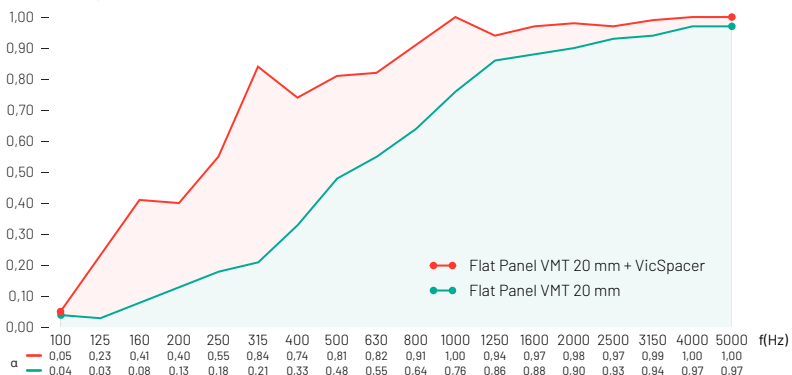
**Raw Materials:** Moisture Resistant MDF and Lacquered Steel

**NRC:** 0.85 (with Flat Panel VMT 20 mm)

**Instalação:** VicFix Mini (included); VicFix J Profile; VicFix Corner Plus

### Performance

Sound Absorption Coefficient



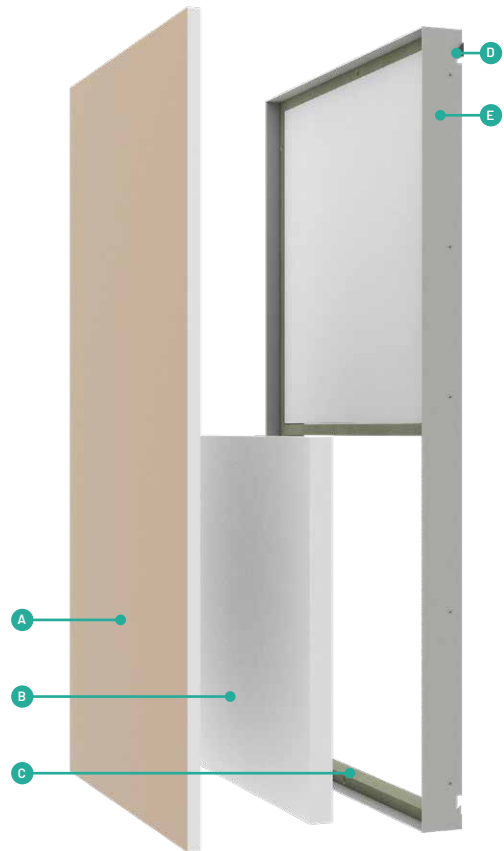
## VicSpacer Plus MKII

This version of the VicSpacer MKII includes **4 extra PET panels**, to further improve the performance of the Flat Panel VMT.

By using one additional layer of PET to increase absorption, this accessory will help to deal with the most demanding acoustic challenges.

**VicSpacer Plus MKII** will need to be combined with Flat Panel VMT of 20 mm thickness (not included).

- A** Flat Panel VMT (1190 × 595 × 20 mm, not included)
- B** VicPET Wool (542 × 555 × 40 mm, only included in VicSpacer Plus MKII)
- C** Moisture Resistant MDF frame
- D** VicFix Mini
- E** Lacquered steel frame



### Colors



White  
Matte



Black  
Matte



Grey  
Matte

### Dimensions

599 × 1194 × 66 mm / 23,6" × 47,0" × 2,6"

### Package Information

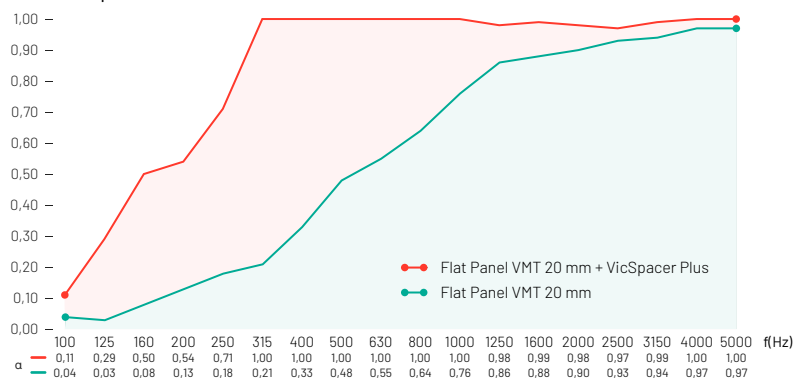
2 units/box

### Technical Information

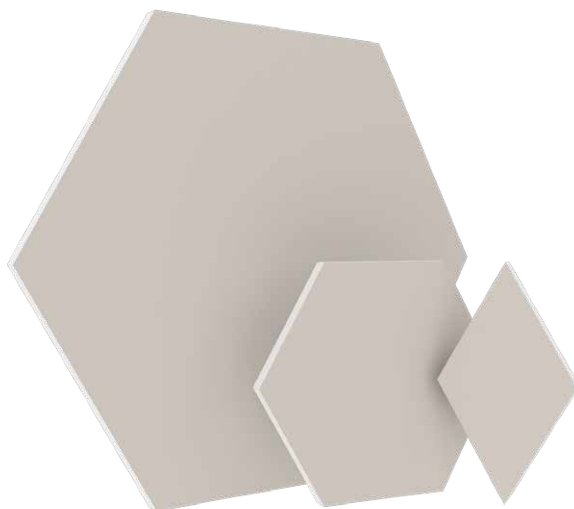
**Raw Materials:** Moisture Resistant MDF, Lacquered Steel and VicPET Wool  
**NRC:** 0.95 (with Flat Panel VMT 20 mm)  
**Instalação:** VicFix Mini (included); VicFix J Profile; VicFix Corner Plus

### Performance

#### Sound Absorption Coefficient



# Vixagon VMT



**Vixagon VMT** is a perfect solution to cushion and reduce sound levels in a cost-effective way. Vicoustic's standard patterns and solid colors for the Vixagon VMT are stylish and work in many different aesthetics and particularly in strongly designed architectural spaces. This product can be used on walls and ceilings and adapted easily owing to its unique shape.

A smaller and more compact version of Vixagon, Vixagon Mini, is also available, offering all of the same acoustic solutions, just in a smaller and more manageable size to create more intricate and creative patterns.

## Dimensions

- A** 700 × 606 × 20 mm / 27.6" × 23.9" × 0.8"
- B** 700 × 606 × 40 mm / 27.6" × 23.9" × 1.6"
- C** 350 × 303 × 20 mm / 13.8" × 11.9" × 0.8"

## Package Information

- A** 12 units/box
- B** 6 units/box
- C** 36 + 36 units/box \*



## Technical Information

**Raw Material:** VicPET Wool

**Acoustic Properties:** Medium and High

Frequencies Absorption

**NRC:** **A** **C** 0,55; **B** 0,70

**Fire Rate:** **A** **C** Europe: Euroclass B -s2, d0; USA: Class A (ASTM-E84)

Canada: CAN/ULC S102, Flame

Spread Rating: 5, Smoke Developed Classification: 115;

**B** Europe: Euroclass B - s2, d0; USA: Class A (ASTM-E84); Canada: N/A

**Installation:** Flexi Glue Ultra

## VMT Colors

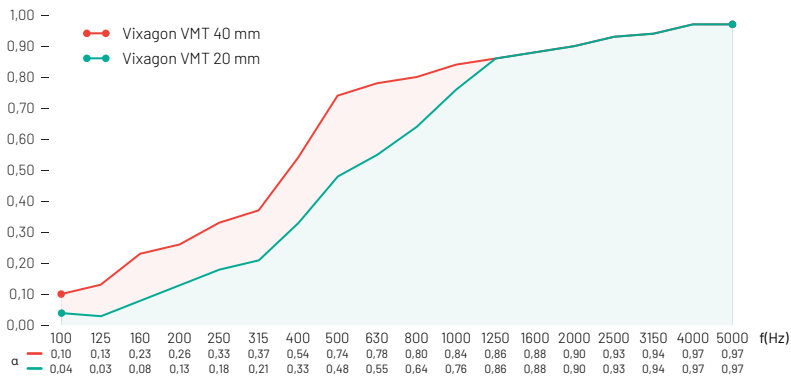


**Available patterns** can be found at the end of the Catalog and at [vicoustic.com](http://vicoustic.com)\*\*



## Performance

Sound Absorption Coefficient



\* The Vixagons Mini are packed in a really innovative way: we are using the same material as the product itself as packaging material. This will give the bonus of having extra Diamond shapes that can be used in conjunction with your Vixagon to create your art-work.

# Vixagon VMT Collections



Introducing three new collections to our well-known Vixagon VMT, the hexagonal-shaped acoustic panel. Having 4 different colors or patterns in the same box will help to have more design versatility, allowing the creation of endless shapes on walls and ceilings. These new version of the Vixagon VMT come in boxes of 12 units.

Made with recycled sound-absorbing materials, the Vixagon is designed to enhance the acoustics of any space while adding a stylish touch to the decor.

## Dimensions

350 × 303 × 20 mm / 13.8" × 11.9" × 0.8"

## Package Information

12 units/box

## Technical Information

**Raw Material:** VicPET Wool

**Acoustic Properties:** Medium and High

Frequencies Absorption

**NRC:** 0.55

**Fire Rate:** Europe: Euroclass B -s2, d0;

USA: Class A (ASTM-E84)

Canada: CAN/ULC S102, Flame

Spread Rating: 5, Smoke Developed

Classification: 115

**Installation:** Flexi Glue Ultra

## VMT Colors

Mediterranean



Moon



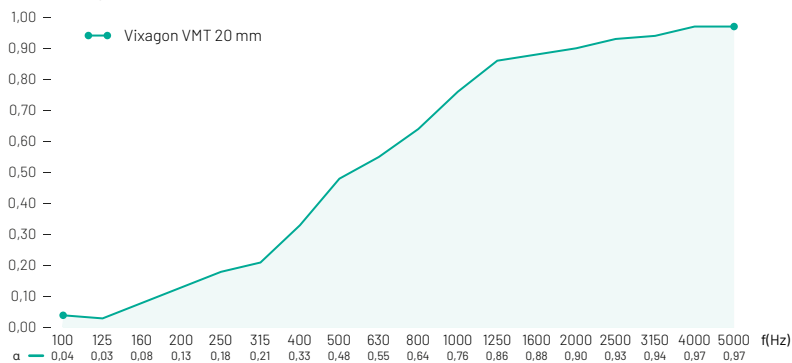
Venice





## Performance

### Sound Absorption Coefficient



*\* The Vixagons Mini are packed in a really innovative way: we are using the same material as the product itself as packaging material. This will give the bonus of having extra Diamond shapes that can be used in conjunction with your Vixagon to create your art-work.*

# VicWallpaper VMT



**VicWallpaper VMT** is a revolutionary new way to manage acoustic and thermal insulation in both residential and commercial settings. Developed to perform on high frequencies, VicWallpaper VMT is ideal for improving speech intelligibility in places such as meeting rooms, living rooms or classrooms. Manufactured in recycled EuroClass B PET, VicWallpaper VMT is easy and fast to install, not requiring any specialized and expensive labor.

## Dimensions

- A** 595 × 595 × 15 mm / 23.4" × 23.4" × 0.6"
- B** 1190 × 595 × 15 mm / 46.8" × 23.4" × 0.6"

## Package Information

8 units/box

## Technical Information

**Raw Material:** VicPET Wool  
**Acoustic Properties:** Medium and High Frequencies Absorption  
**NRC:** 0,20  
**Fire Rate:** Europe: Euroclass C s2, d0; USA: Class A (ASTM-E84); Canada: N/A  
**Installation:** Flexi Glue Ultra

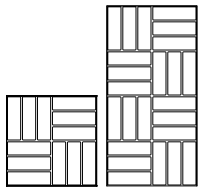
## VMT Colors



**Available patterns** can be found at the end of the Catalog and at [vicoustic.com](http://vicoustic.com)

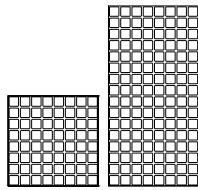


### Pattern Designs



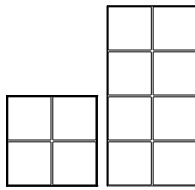
Deck

595 / 1190 × 595 × 15 mm



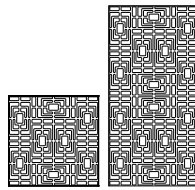
Square 8

595 / 1190 × 595 × 15 mm



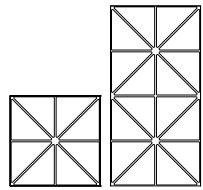
Square 30

595 / 1190 × 595 × 15 mm



Symmetric

595 / 1190 × 595 × 15 mm

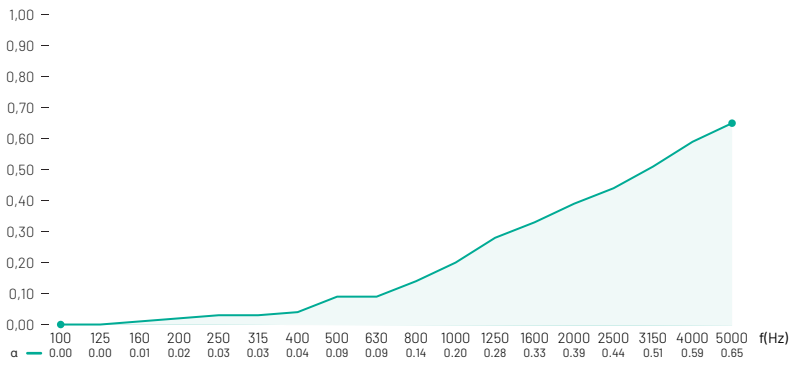


Triangles

595 / 1190 × 595 × 15 mm

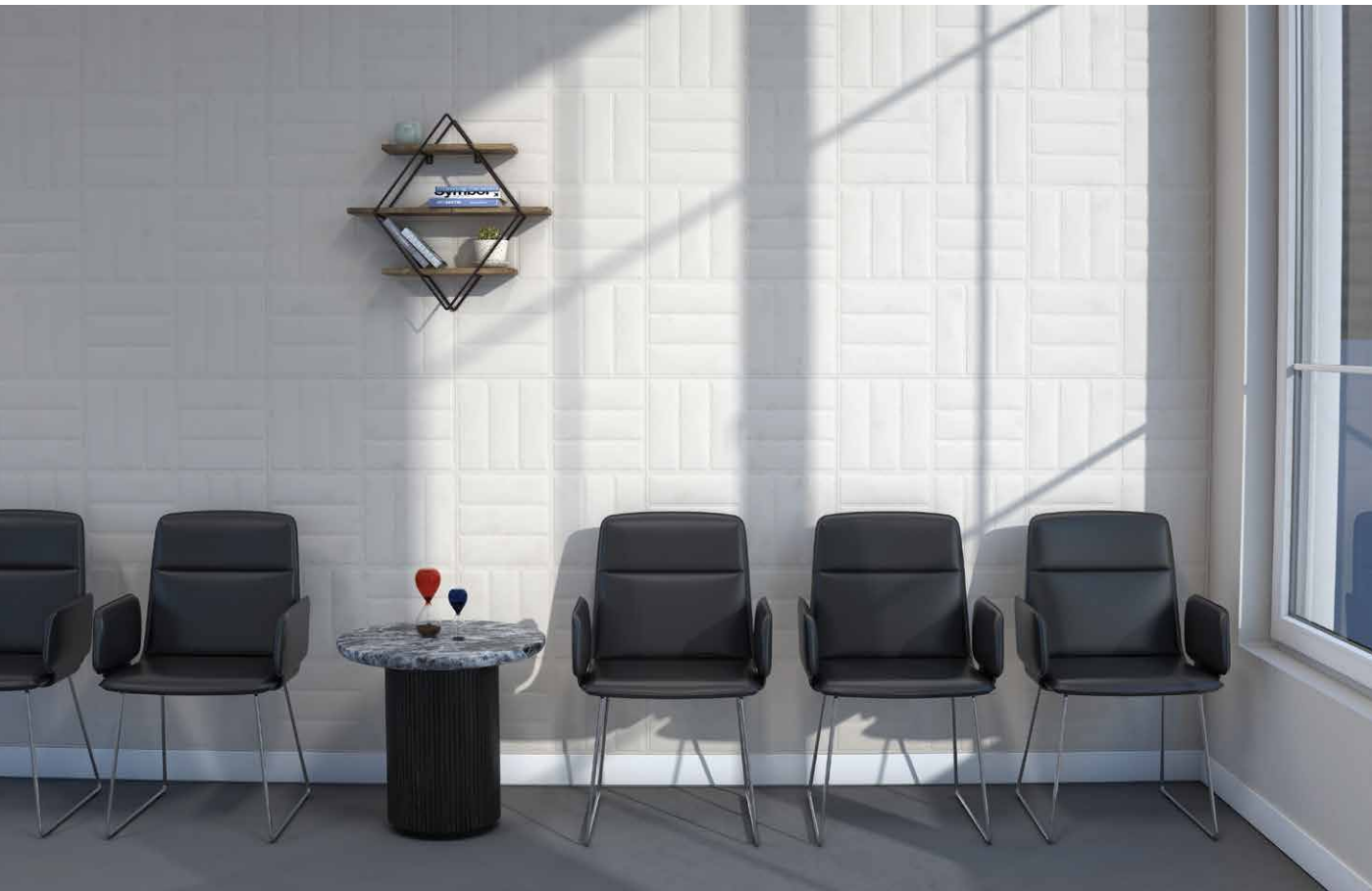
### Performance

Sound Absorption Coefficient

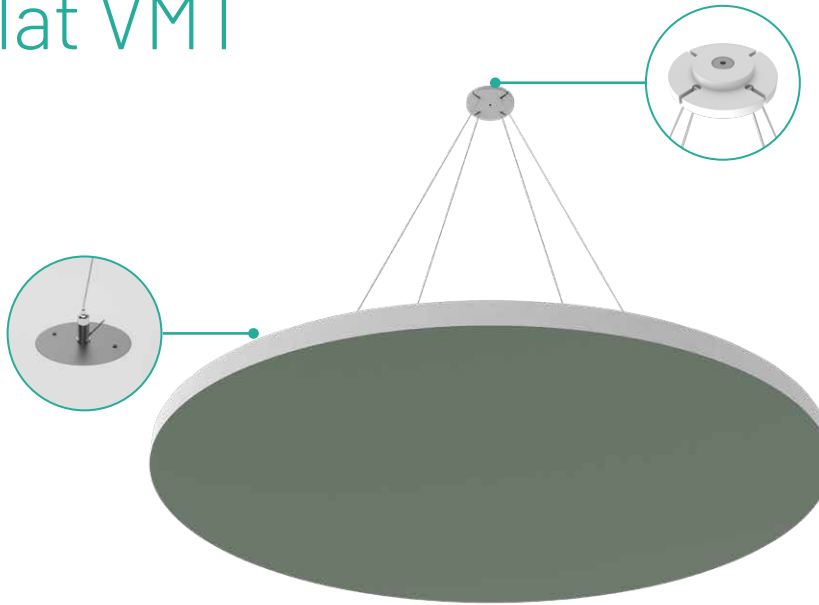


### Features

- Premium high density VicPET Wool
- Light weight
- Easy to install
- Easy to clean and maintain



# ViCloud Flat VMT



**ViCloud Flat VMT** is a simple and lightweight, suspended acoustic solution that is ideal for restaurants, open plan offices, convention centers, atriums, or any public space where there is a great concentration of people and where background noise, created by a room full of conversations, can quickly build up.

In addition, by using Vicoustic Virtual Material Technology, ViCloud Flat VMT is customizable and adaptable to meet your architectural needs. For exquisite architectural soundscapes, that subtly align to your existing or newly renovate space, ViCloud Flat VMT may just be the solution you need.

## Dimensions

- A** 1160 × 1160 × 40 mm / 45.7" × 45.7" × 1.6"
- B** 1160 × 1005 × 40 mm / 45.7" × 39.6" × 1.6"
- C** Ø 1160 × 40 mm / Ø 45.7" × 1.6"
- D** 1160 × 1068 × 40 mm / 45.7" × 42" × 1.6"

## Package Information

4 units/box

## Technical Information

**Raw Material:** VicPET Wool

**Acoustic Properties:** Medium and High Frequencies Absorption

**Fire Rate:** Europe: Euroclass B - s2, d0; USA: Class A (ASTM-E84); Canada: N/A

**Installation:** Magnetic and Mechanical Suspended Fixation (Included)

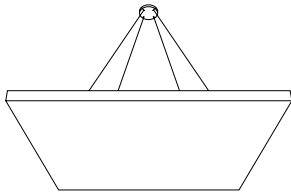
## VMT Colors



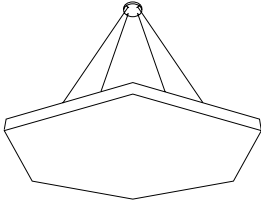
**Available patterns** can be found at the end of the Catalog and at [vicoustic.com](http://vicoustic.com)



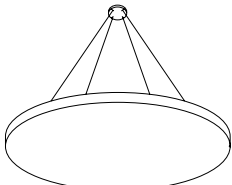
### Shapes



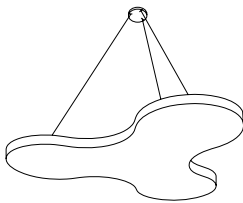
A Square



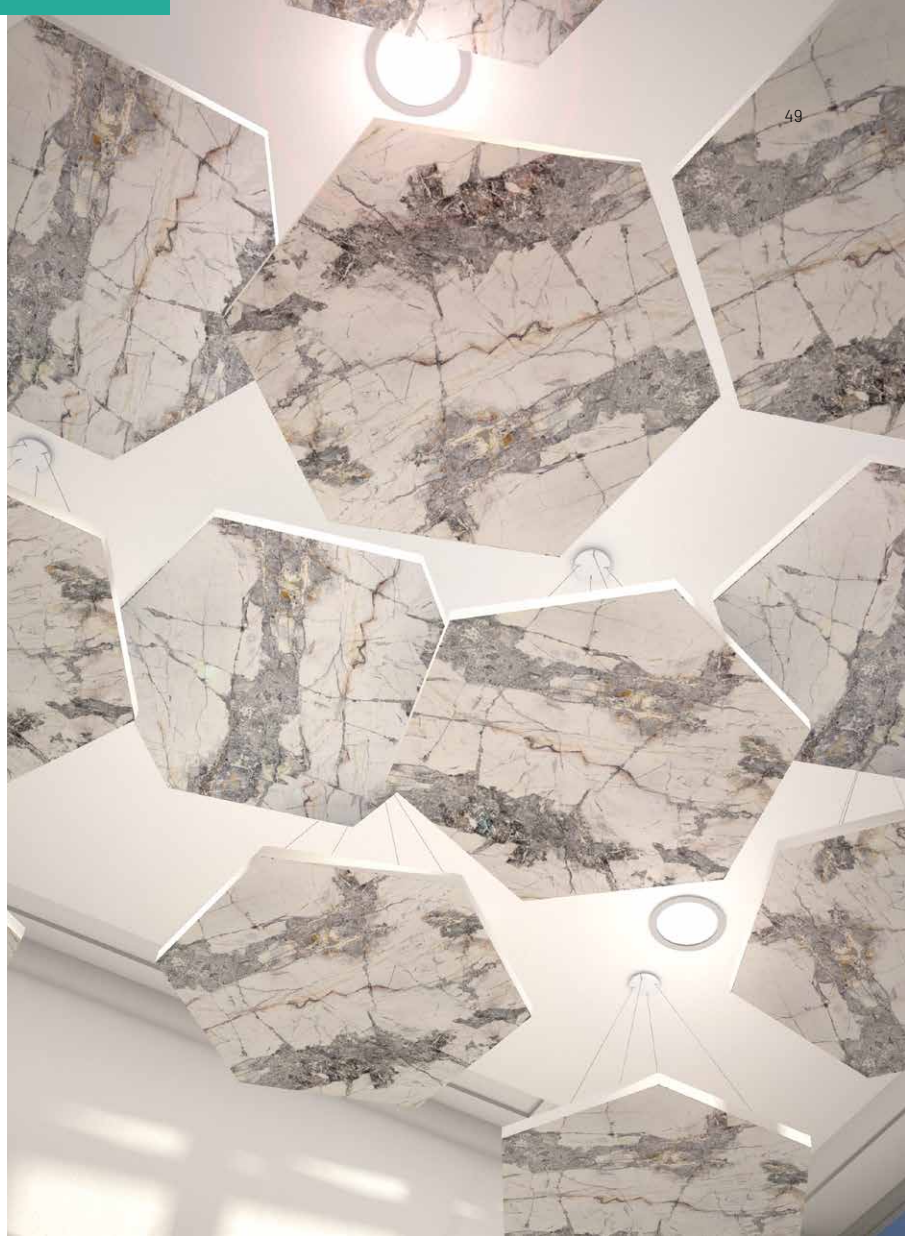
B Hexagon



C Round



C Petal

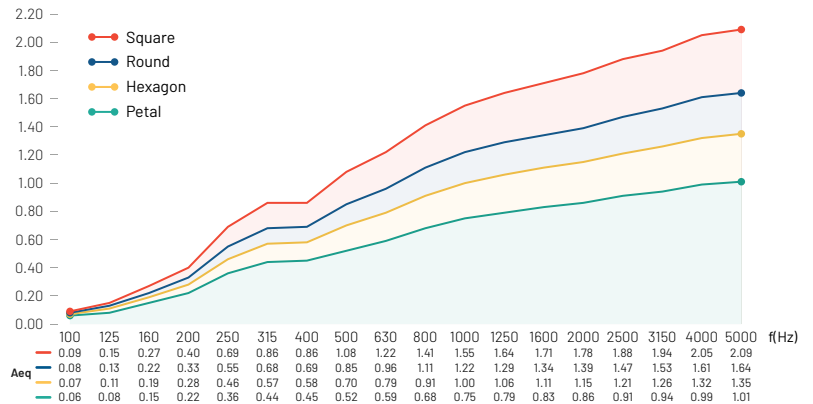


### Features

- Premium high density VicPET Wool
- High Performance in medium and high frequencies
- Light weight
- Easy to install
- Easy to clean and maintain

### Performance

Equivalent Absorption Area (m<sup>2</sup>/unit)



# ViCloud 3D VMT



A lightweight and uncomplicated acoustic solution, the **ViCloud 3D VMT** hangs suspended in the air to support and manage sound where there is a lot of background noise, conversation and disruptive sounds.

Available in a range of shapes and colors, ViCloud 3D VMT are ready to be installed without the need of professional assistance and in lots of different spaces. Sustainable and extremely durable, these can significantly reduce excess noise in various settings.

## Dimensions

- A** 1160 × 1160 × 40 mm / 45.7" × 45.7" × 1.6"
- B** 1160 × 1005 × 40 mm / 45.7" × 39.6" × 1.6"
- C** Ø 1160 × 40 mm / Ø 45.7" × 1.6"
- D** 1160 × 1068 × 40 mm / 45.7" × 42" × 1.6"

## Package Information

4 units/box

## Technical Information

**Raw Material:** VicPET Wool

**Acoustic Properties:** Medium and High Frequencies Absorption

**Fire Rate:** Europe: Euroclass B - s2, d0; USA: Class A (ASTM-E84); Canada: N/A

**Installation:** Magnetic and Mechanical Suspended Fixation (Included)

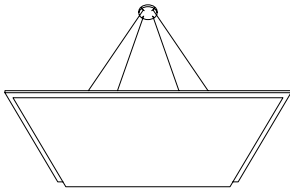
## VMT Colors



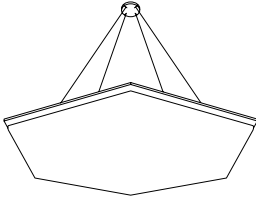
Available patterns can be found at the end of the Catalog and at [vicoustic.com](http://vicoustic.com)



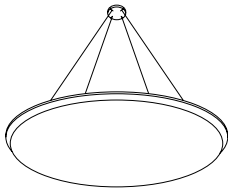
### Shapes



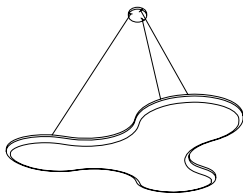
A Square



B Hexagon



C Round



C Petal

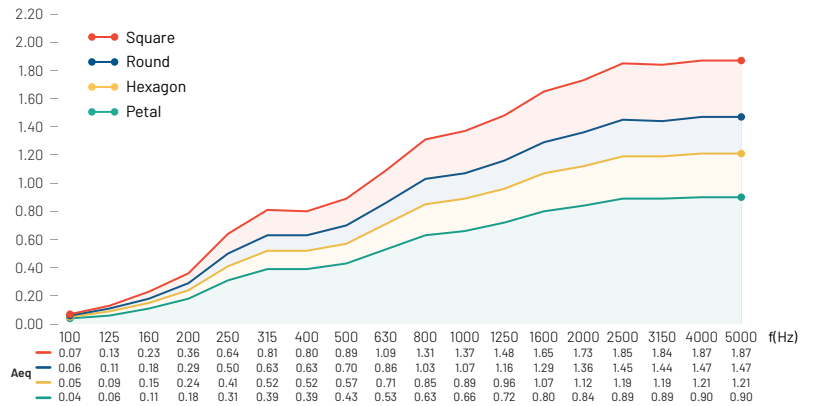


### Features

- Premium high density VicPET Wool
- High Performance in medium and high frequencies
- Light weight
- Easy to install
- Easy to clean and maintain

### Performance

Equivalent Absorption Area (m<sup>2</sup>/unit)



# Suspended Baffle VMT 3D



**Suspended Baffle VMT 3D** is made from VicPET Wool - a non-woven textile produced mainly from recycled plastic bottles. Being a suspended acoustic element, presents twice the area of absorbing material exposed of a common acoustic panel, making it a very efficient solution to control noise build up in big public or industrial spaces.

These Baffles can be installed both in Horizontal and Vertical position, and they they can be customised. It is a safer product compared to normal baffle solutions because it doesn't have a metal or wood structure.

## Dimensions

1190 × 595 × 20 mm / 46.8" × 23.4" × 0.8"

## Package Information

8 units/box

## Technical Information

**Raw Material:** VicPET Wool

**Acoustic Properties:** Medium and High frequencies Absorption

**Fire Rate:** Europe: Euroclass B, s2 d0; USA: Class A (ASTM-E84);

**Installation:** Wire Rope (steel cable with a hook) Fixation System (included)

## VMT Colors



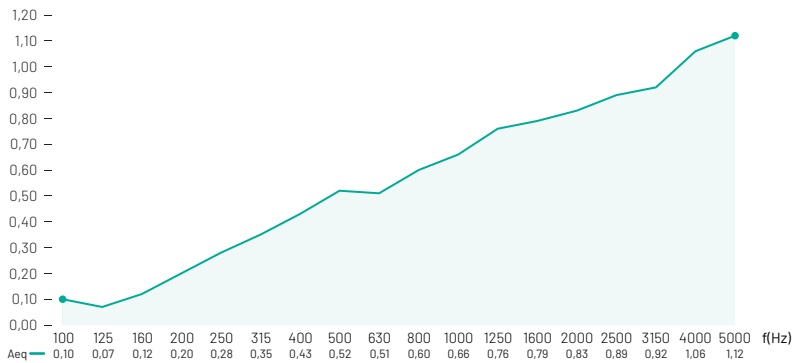
**Available patterns** can be found at the end of the Catalog and at [vicoustic.com](http://vicoustic.com)





**Performance**

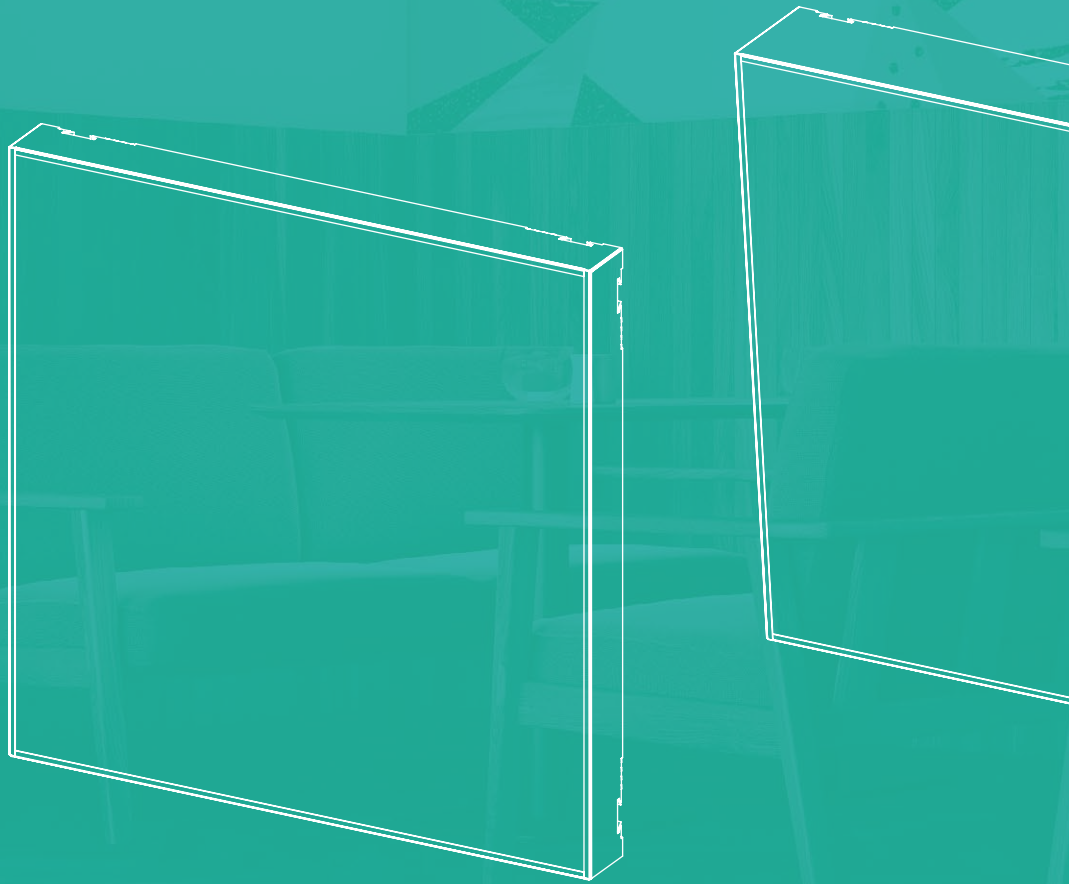
Equivalent Absorption Area (m<sup>2</sup>/unit)

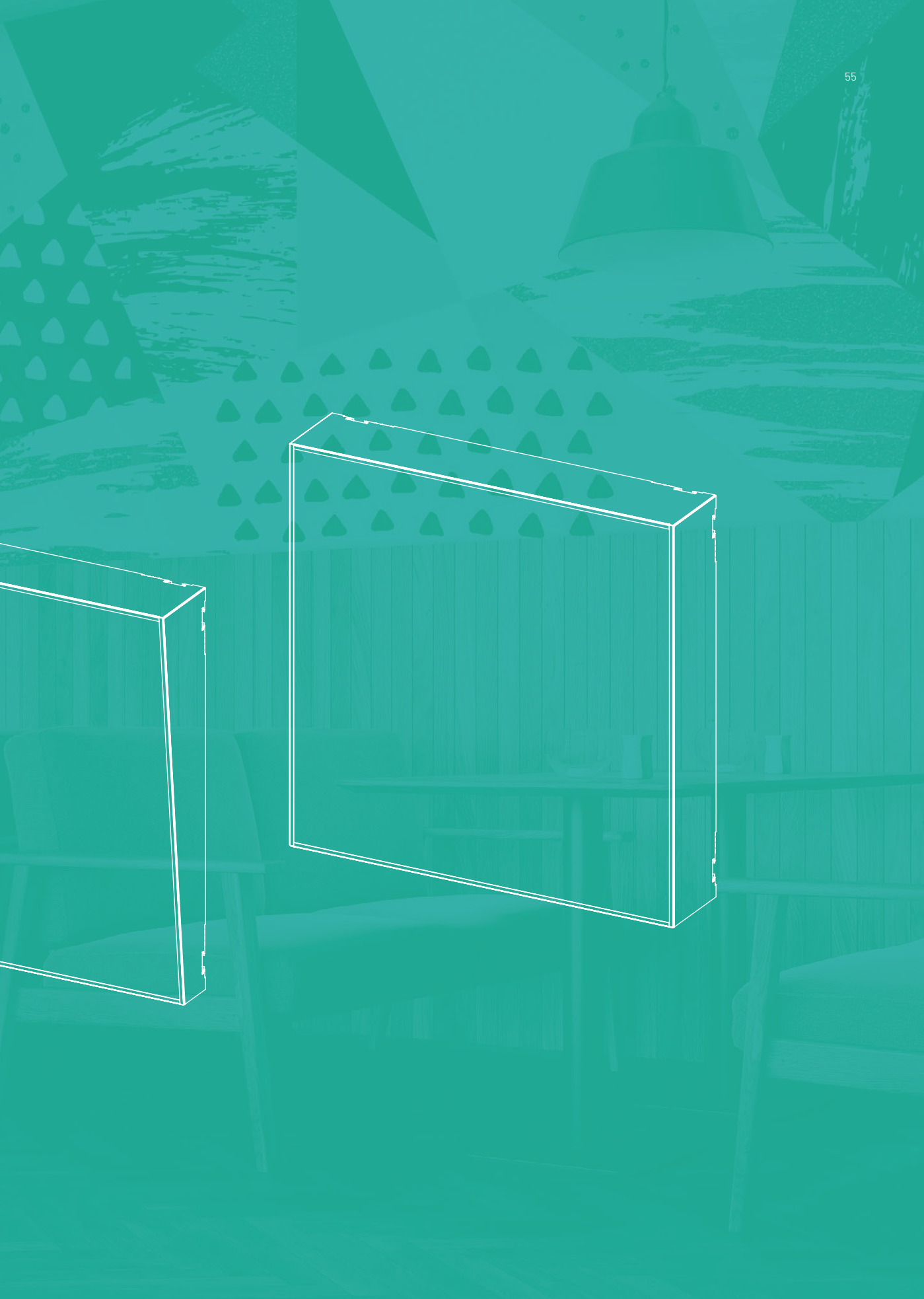


**Features**

- High Performance in medium and high frequencies
- Light weight
- Easy to install
- Easy to clean and maintain

# Cinema VMT Line





# Cinema VMT Line Piano VMT / Forte VMT / Fortissimo VMT

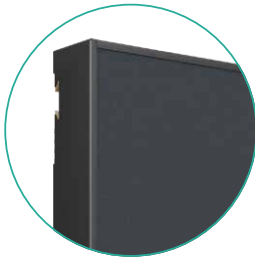


Vicoustic's Cinema Family is composed of 3 new panels: **Cinema Piano VMT**, **Cinema Forte VMT** and **Cinema Fortissimo VMT**. With the combination of the 3 Cinema panels you can create several 3D surfaces, with endless creativity design options. Furthermore, these panels are mostly made of recycled materials, in agreement with Vicoustic's sustainability compromise.

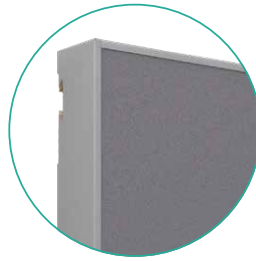
The Cinema line of products is available in 6 different finishes and, since it was developed with VMT technology, the panels have the possibility to be customized.



## Finishes



Black



Grey



Natural White



Grey Stone

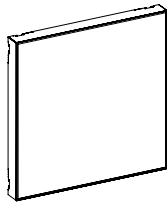


Concrete 1

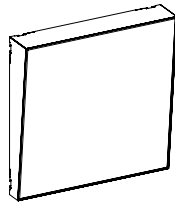


Calacatta Crema

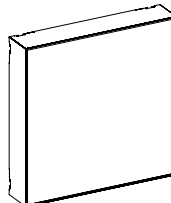
## Models



A Piano VMT



B Forte VMT



C Fortissimo VMT

## Dimensions

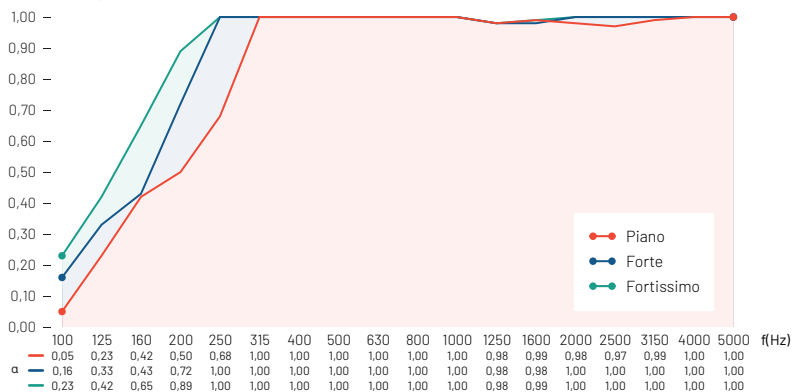
- A 595 × 595 × 60 mm  
/ 23.4" × 23.4" × 2.36"
- B 595 × 595 × 120 mm  
/ 23.4" × 23.4" × 4.72"
- C 595 × 595 × 120 mm  
/ 23.4" × 23.4" × 4.72"

## Package Information

2 unit/box

## Performance

Sound Absorption Coefficient



## Technical Information

**Raw Material:** VicPET Wool, ViCycle, MDF and Lacquered Steel

**Acoustic Properties:**

Broadband Absorption

**NRC:** 0,95 (Piano, Forte);

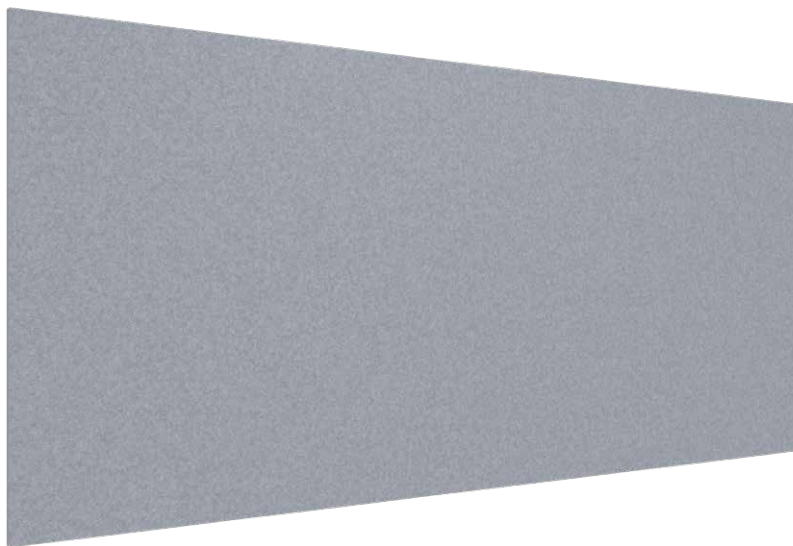
1,00 (Fortissimo)

**Installation:** VicFix Mini (included);

VicFix J Profile; VicFix Corner Plus



# Flat Panel PET HD



Flat Panel PET HD is made from High-Density VicPET Wool - a low-emitting material with excellent acoustic performance. This acoustic panel is more resistant than the low-density PET panels being more suitable for use in bustling spaces that require acoustic treatment.

Designed to perform primarily in medium and high frequencies, **Flat Panel PET HD** is an excellent solution for any application for treating acoustic defects.

---

## Dimensions

2800 × 1200 × 12mm / 110.2" × 47.2" × 0.5"

## Package Information

8 units/box

## Technical Information

**Raw Material:** High-density PET

### Acoustic Properties:

Medium and High frequencies Absorption

**NRC:** 0.40

**Installation:** Flexi Glue Ultra (not included)

## PET Colors



White



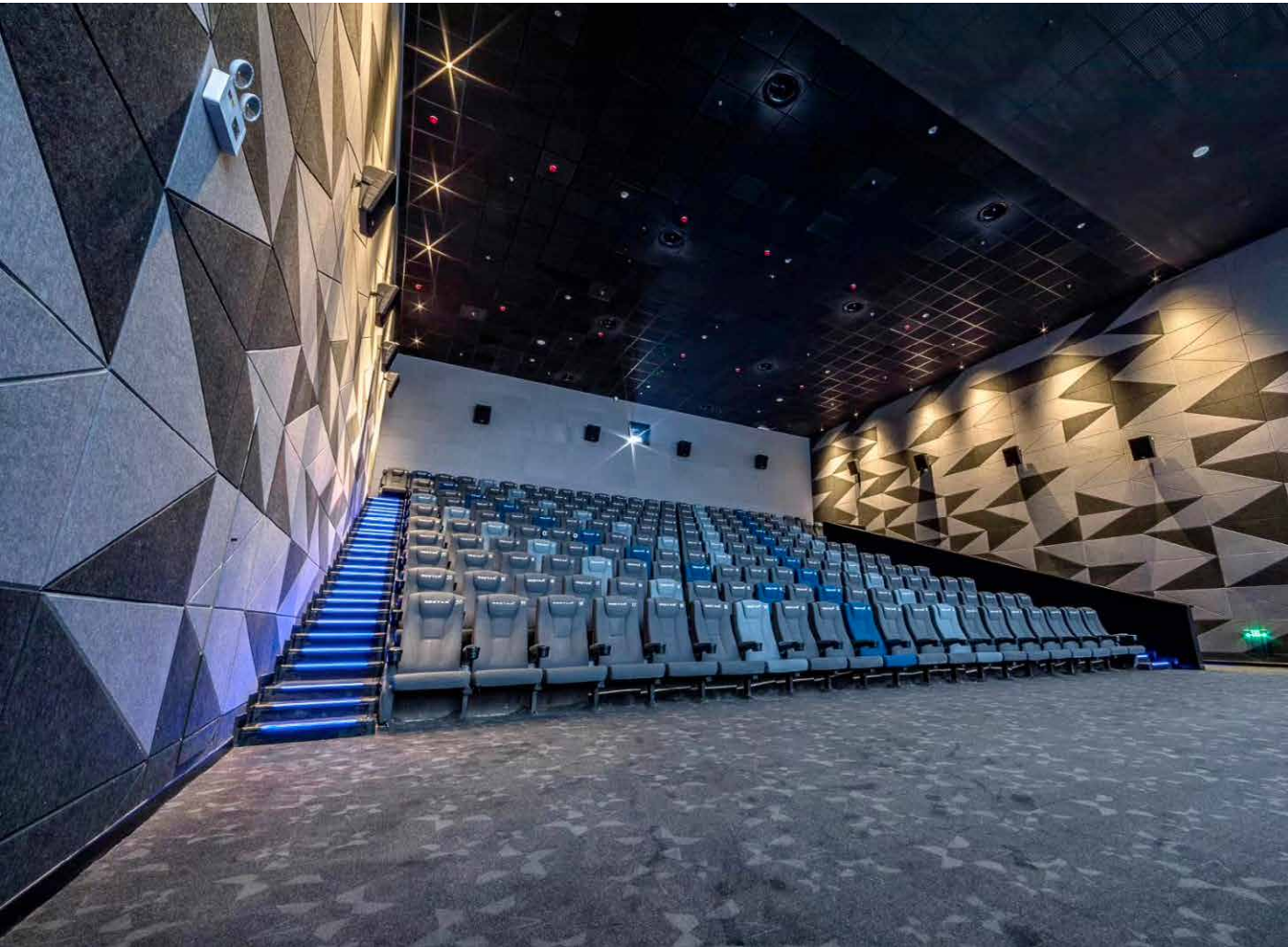
Black



Grey

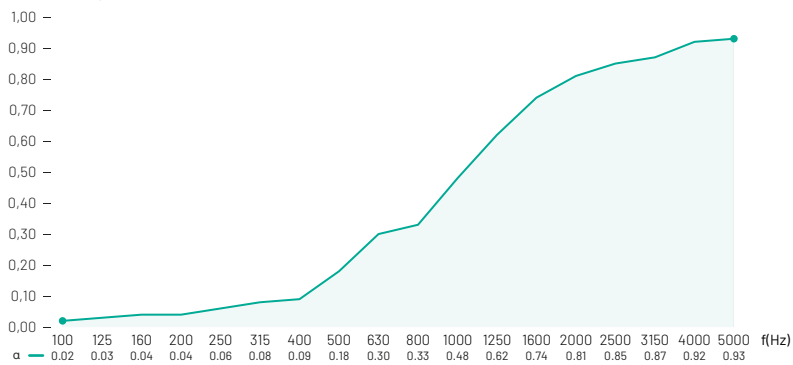


Dark Grey



## Acoustic Performance

Sound Absorption Coefficient



## Features

- Produced mainly from recycled plastic bottles
- Sides in the same color as the entire panel
- Light weight
- Easy to install
- Easy to clean and maintain

# Suspended Baffle Set



The **Suspended Baffle Set** is a collection of ceiling baffles designed to be as versatile as possible and solve indoor acoustic issues, characterized by its easy installation system. Made from sustainable PET produced mostly from recycled plastic, the Suspended Baffle Set comes in two configurations: the 3-baffle version (1200 × 600 × 40 mm) and the 12-baffle version (1200 × 1200 × 40 mm).

Thanks to its innovative fixation system, the baffles can be placed sequentially with the fixations distributed over more spaced intervals than usual, using fewer fixation hooks and drilling holes.

## Dimensions

- A** 1200 × 600 × 40 mm / 47.2" × 23.6" × 1.6"
- B** 1200 × 1200 × 40 mm / 47.2" × 47.2" × 1.6"

## Package Information

- A** 3 units/box; **B** 12 units/box

## PET / Profile Colors



White



Black

## Technical Information

### Raw Material:

VicPET Wool, Galvanized Steel

### Acoustic Properties:

Medium and High frequencies Absorption

### Fire Rate:

Europe: Euroclass B -s2, d0 (White PET),

Euroclass B -s1, d0 (Black PET);

USA: Class B (White PET),

Class A (Black PET)

### Installation/Accessories:

Wire Rope (steel cable with a hook)

fixation system (included);

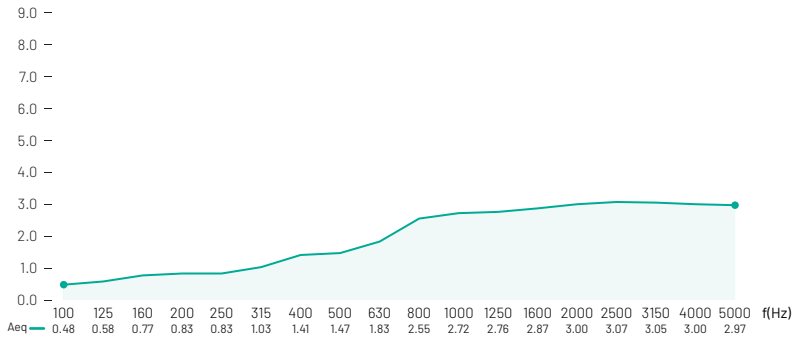
Suspended Baffle Set Connector

(optional, not included)



## Performance

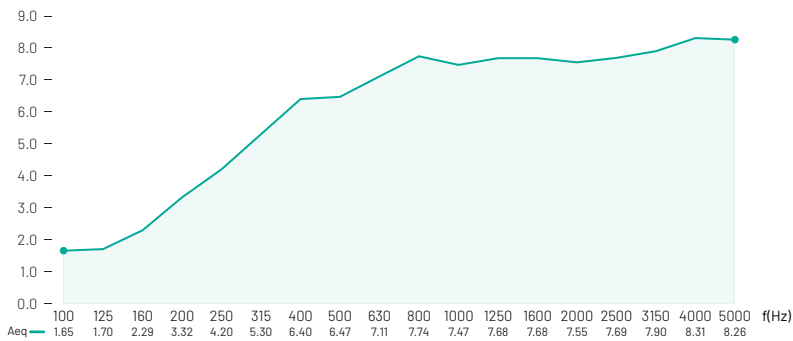
Equivalent Absorption Area (m<sup>2</sup>/set)



### A 3-baffle version

An efficient solution for public or industrial spaces (like classrooms, canteens, factories), where you need to control noise build-up.

Equivalent Absorption Area (m<sup>2</sup>/set)



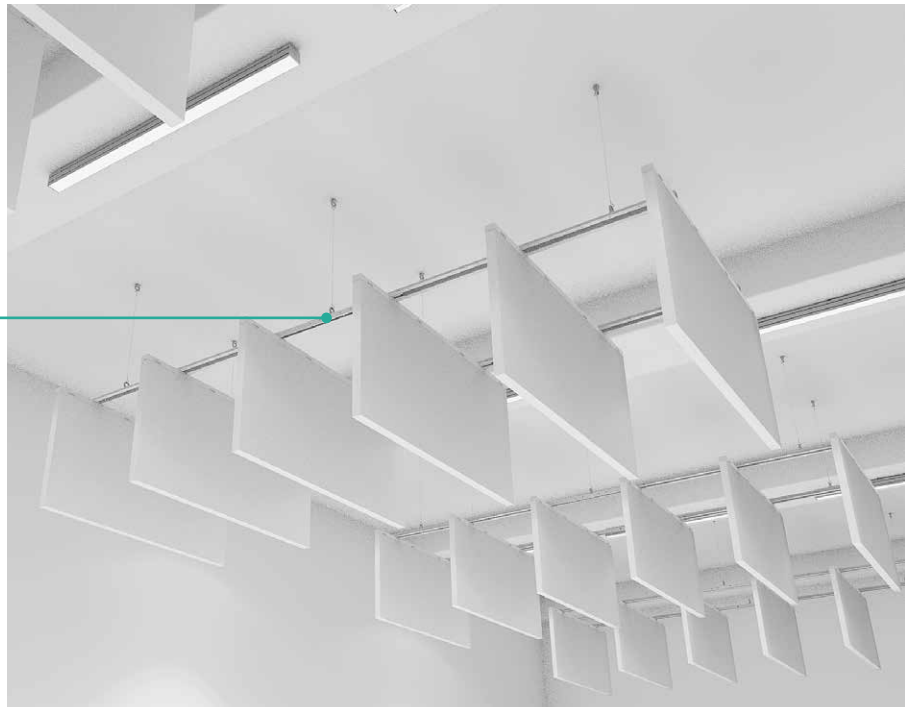
### B 12-baffle version

An efficient and cost-effective solution for voice and musical applications (stadiums or arenas). It's more efficient to use in larger spaces and it will extend the sound absorption performance at lower frequency ranges, when compared with a single unit.



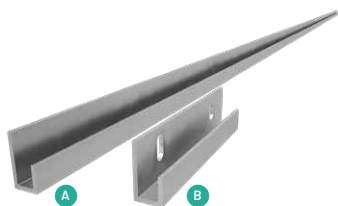
### Suspended Baffle Set Connector

For large installations, an optional Connector makes it possible to combine several baffle sets and reduce even more the need of fixation hooks.



## VicFix systems

VicFix systems were developed to simplify the application of Vicoustic acoustic panels, reducing installation time. For temporary or long-term installations, there is an accessory for each application.



### VicFix J Profile

Made of aluminium, the VicFix J Profile is sturdy, but easy to fix on the wall and ceiling. It allows the user to interchange absorption and diffusion panels according to his desires or room acoustic objectives, by simply sliding the panels.

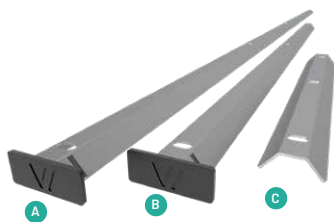
**Dimensions:** **A** 10 × 15 × 2000 mm; 0.59" × 0.99" × 78.74"; **B** 10 × 15 × 80 mm; 0.59" × 0.99" × 3.15"



### VicFix Mini

VicFix Mini is easy to fix on the wall, simplifying the process of installation of acoustic panels, making it fast and effective. It also allows the user to interchange absorption and diffusion panels according to his desires or room acoustic objectives.

**Dimensions:** 10 × 15 × 76 mm; 0.59" × 0.99" × 2.99"



### VicFix Suspension Profile <sup>NEW</sup>

VicFix Suspension Profile was developed to install acoustic panels using the J Profile fixation system on the ceiling of a room, by simply sliding the panels.

**Dimensions:** **A** 9 × 28 × 1190 mm; 0.35" × 1.1" × 46.85"; **B** 9 × 28 × 595 mm; 0.35" × 1.1" × 23.43"; **C** 9 × 28 × 225 mm; 0.35" × 1.1" × 8.86"



### VicFix Corner Plus

VicFix Corner Plus was developed to support all acoustic panels using the J Profile fixation system. With this accessory you can easily install the panels on the corner of a room, a solution that allows it to work as a semi Bass Trap.

**Dimensions:** 80 × 83 × 21,5 mm; 3.15" × 3.27" × 8.46"

## VicFix Frame

Lightweight fixation frame developed to hang 3 (3 × 1) or 4 (2 × 2) acoustic panels on the wall. It is easy to mount and it allows the exchange of panels from the frame, which can be used with panels made out of VicPet Wool, M1 and EPS.

**Dimensions:** **A** 400 × 1600 mm; 15.75" × 63"; **B** 1000 × 1000 mm; 39.37" × 39.37"



## VicFix Magnetic

This accessory is composed by a round metal plate, that must be glued to our products and a magnet that should be screwed to the wall. Very practical for those who want to change the place of the panels.

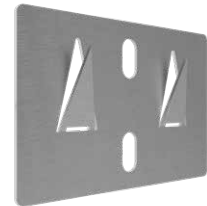
**Dimensions:** Metal plate: Ø150 mm / Ø5.9"; Magnet: Ø20 mm / Ø0.79"



## VicFix Metallic

Easy and fast to install, you just need to screw the VicFix Metallic into the wall, and hang the acoustic panels. Perfect for VicPET Wool and M1 Foam products.

**Dimensions:** 75 × 10 mm; 2.95" × 0.59"



## VicFix T-Bar

Developed for ceiling suspension of Vicoustic products using T-Grid system.

**Dimensions:** 10 × 15 × 80 mm; 0.59" × 0.99" × 3.15"



## VicFix Base

The VicFix Base allows you to adapt the classic products to our VicFix J Profile fixation system. You just have to glue the acoustic panels to the base and it quickly gets fit to be used with the new fixing system.

**Dimensions:** 595 × 595 × 12 mm; 25.42" × 25.42" × 0.47"

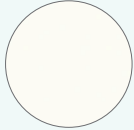




# Finishes

---

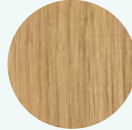
## Wood Colors



White Matte



Garnet Red



Natural Oak



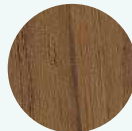
Brown Oak



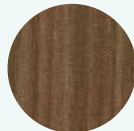
Black Matte



Reed Green



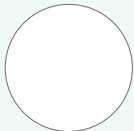
Natural Walnut



Dark Walnut

---

## VMT Colors



Natural White



Black



Grey



Light Grey



Blue



Bondi Blue



Pumpkin Orange



Coral



Musk Green



Moss Green



Beige



Brown

# VMT Collections

## Natural Stones



Calacatta  
Carrara



Calacatta  
Crema



Emperador  
Dark



Fusion  
Wow



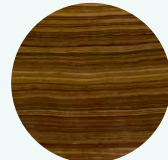
Grey  
Stone



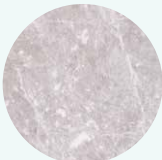
Hematite  
Black



Invisible  
Grey



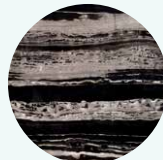
Magic  
Brown



Moonlight  
Grey



Patagonia



Port  
Black



Striato  
Elegante



Travertino  
Classico

---

Natural Woods



Almond  
Oak



Black  
Laurel



Ebony



Oak

---

Concrete



Concrete\_1



Concrete\_3

---

Nature



Leafs



Palm B&W



Tropical

# Vicoustic

Perfecting  
Acoustics  
Sustainably

**Vicoustic is a company in constant evolution with strong international expression, represented in more than 80 countries**

Vicoustic understands sound – and we know what makes a truly exceptional acoustic and audio experience. Being at the forefront of acoustic technology, we combine engineered systems with stunning design to bring you sound that is free of compromises, but full of high quality performance.

A leading force in the industry, founded in 2007, Vicoustic is found in over 80 countries around the world. We understand the unique sound dynamics of a room or venue. So whether it's a Home Cinema, Hi-Fi room to a professional sound system for radio and television, our expertise for peak acoustic performance is second-to-none.

The products from Vicoustic deliver clever and innovative solutions to meet the demands of spaces which require a sophisticated soundscape. Taking on board the high standards of our customers, we continuously strive to manufacture products of superior functionality, adaptability, but all the while with a sustainable and environmentally conscious mind-set.

**From conception through to completion, we work closely with architects, engineers and designers to deliver a project successfully irrespective of complexity.**

Our project team includes senior acoustic engineers and designers that are experts in taking you on your acoustic and design needs. The pioneering hardware and software tools we have engineered have proved to be very reliable to support the integration of acoustic treatment and sound insulation solutions through a new-build or a refurbishing project.

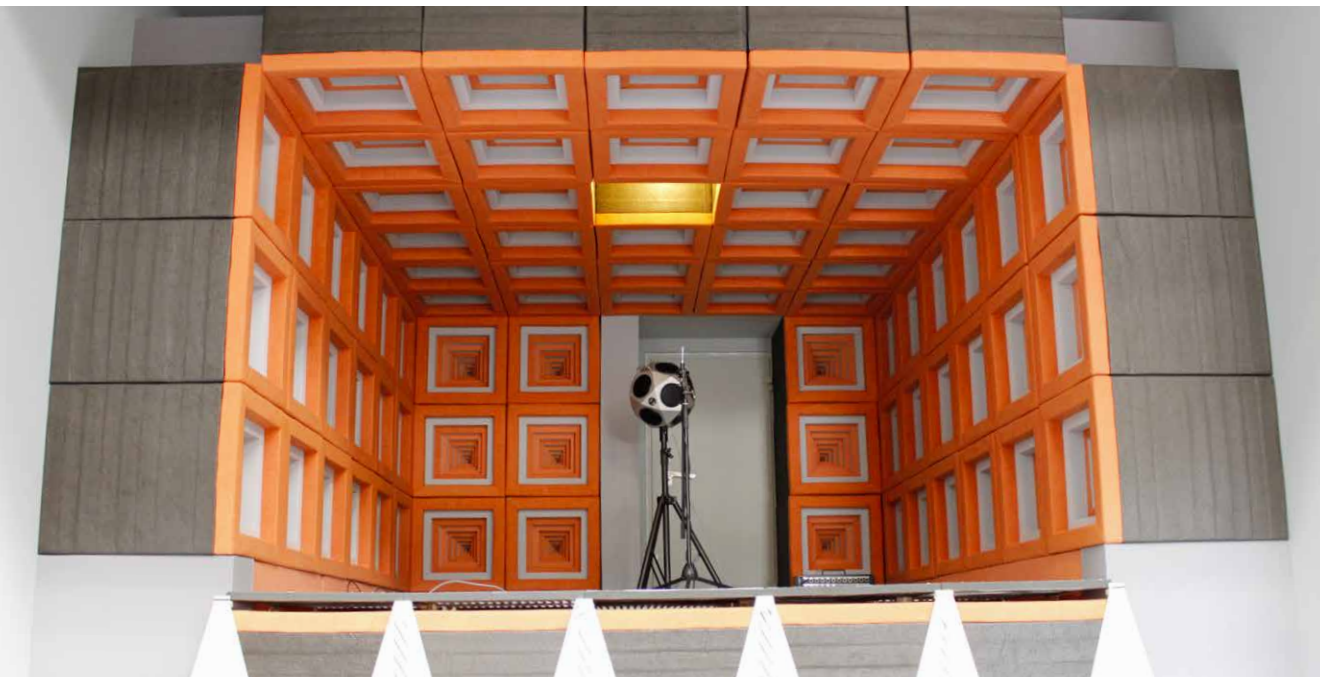
Our Research and Development Team is also available to develop customized products to satisfy your needs.

Our customers will also be supported by our Sales, Marketing and Logistics teams to assist with transportation, communication and all information that may be required: pricing; installation guides; catalogues; etc.

Together we have proven that we can provide high levels of value to see our customers through the whole process of installing acoustic solutions.

This includes reliable and effective recommendations of products and support services throughout your whole project process from conception through to completion.

# A Research center for rigorous in-house testing



## **This is what makes Vicoustic a distinguished brand and leader in its sector**

We believe that Vicoustic should constantly be paving the way, innovating and driving sound technologies to ensure that we are not only leading the field, but producing the best acoustics in every space we are acoustically curating.

What makes us outliers in the industry is our 'Vicoustic Research Centre', inaugurated in 2012 alongside the Vicoustic HQ. We pride ourselves on developing and continuously advancing our technologies and ways of working to deliver the best product to our customers.

The Research Centre operates on a multidisciplinary platform: the 'Multifunctional Room' and the 'Innovative Acoustic Chamber'. We have a brilliant (and fun!) time using this centre to test our products and investigate and challenge the way we use audio and acoustic technologies.

2023 sees the control room of the Vicoustic Laboratory where we test our products acoustic performance redesigned to fit custom-designed acoustic solutions with the brand's signage.

# Vicoustic Sustainability Approach

## **In the past decade, Vicoustic has been developing a strong concern in terms of creating new sustainable acoustic solutions**

We are committed to making products in an environmentally friendly way. This is important to Vicoustic and an integral part of our product development.

Following an extensive project looking into the sustainability of our creations, a substantial part of our products are now made using recycled or recyclable materials. Most notably, Vicoustic has increased the use of VicPET Wool. A non-woven textile with superb acoustic performance, but predominantly made from recycled plastic bottles.

2024 sees the opening of Vicoustic's HQ new facilities, one of the most modern and innovative acoustic solutions factories in the world, enabling the ongoing development and manufacture of eco-friendly acoustic panels and sound booths.

But sustainability is not limited to manufacturing. Our aim for a greener product is also in the quality and durability of our creations and we aim for these to have a great, long and lasting life.

**WACOUSTIC**





### Production

Strategically located in the largest industrial cluster in Portugal



### Packaging

Each individual panel is inspected, placed in plastic casing and boxed. Production and Logistic enhancements guarantee high quality control and fast expedition



### Shipping

Vicoustic Acoustic Solutions are currently being shipped over 80 different countries worldwide



### Installation

"Out of the box" solutions, easy to install



Cofinanciado pelo:  
União Europeia

**HQ and Factory** Rua do Polo 3, Nr. 151, Freamunde  
4590-335 Paços de Ferreira  
Portugal  
T(+351) 255 070 044

**Logistics** Avenida do Polo 3, Nr. 159, Carvalhosa  
4590-137 Paços de Ferreira  
Portugal  
T(+351) 917 851 019

**Info and Sales**  
E [sales@vicoustic.com](mailto:sales@vicoustic.com)

**Project Department**  
E [projects@vicoustic.com](mailto:projects@vicoustic.com)

[www.vicoustic.com](http://www.vicoustic.com)



See all Catalogs

**V/COUSTIC**  
INNOVATIVE ACOUSTIC SOLUTIONS